

Lease Statistics (FY2017)

[Key Points]

- Total lease transaction volume: 4,875.9 billion yen, decreased by 2.9% compared with the volume in FY2016.
- Leasing capital investment: 4,642.8 billion yen, decreased by 1.7% compared with FY2016.
- Leasing percentage: 5.35%
- Components of total lease transaction volume: "Construction Equipment" increased double-digit. "Public Sector and Others" increased in a row of 6 years.
- Leasing capital investment (Consolidated basis): 6,814.7 billion yen, decreased by 2.0% compared with FY2016 (Decreased by 0.5% for domestic and 8.3% for overseas).

◆ Total Lease Transaction Volume and Leasing Capital Investment

Total lease transaction volume for FY2017 was 4,875.9 billion yen, a decrease of 2.9% compared with FY2016; and leasing capital investment was 4,642.8 billion yen, a decrease of 1.7% compared with FY2016, total lease transaction volume decreased in a row of 2 years, leasing capital investment turned to decrease for the first time in 3 years.

◆ Leasing percentage

Leasing percentage (ratio of leasing capital investment to the total private capital investment) in FY2017 was 5.35%; i.e. approximately over 5% of private capital investments were made through leasing.

◆ Lease Transaction Volume by Type of Equipment

Construction Equipment (22.5% up) had showed a double-digit increase. Factory Equipment (7.2% up) had also showed positive growth. On the other hand, Information and Communication Equipment (0.3% down), Office Equipment (2.1% down), Industrial Equipment (12.0% down), Transport Equipment (0.2% down), Medical Equipment (3.4% down), and Commercial and Service Equipment (1.5% down) had showed negative growth respectively.

◆ Lease Transaction Volume by Size of Lessee and Lessee's Business Type

"Small and Medium Sized Companies" (companies with capital of 0.1 billion yen and less or solo proprietors) which accounted for approximately over 50% of total lessees showed a slightly rise (0.2% up) for the first time in 2 years. "Public sector and Others" a rise (1.8% up) in a row of 6 years. "Large Companies" (companies with capital of over 0.1 billion yen) declined (8.5% down) for the fifth year in a row. "Manufacturing" (9.1% down) and "Non-Manufacturing" (1.1% down) had decreased in a row of 2 years respectively.

◆ (Reference) Consolidated Lease Statistics (FY2017)

Leasing capital investment for FY2017 on a consolidated basis was 6,814.7 billion yen, a decrease of 2.0% compared with FY2016. Components were 5,638.6 billion yen for domestic leasing (0.5% down) and 1,176.1 billion yen for overseas leasing (8.3% down).

Lease Statistics (April 2018)

The lease transaction volume in April 2018 is 424.7 billion yen, increased by 2.6%, compared with the same period of the last year. The lease transaction volume had turned to positive growth for the first time in 2 months. With regard to the type of equipment, Factory Equipment (13.0% up), and Construction Equipment (10.7% up) had showed a double-digit increase. Information and Communication Equipment (8.2% up), Transport Equipment (9.0% up) and Commercial Equipment (1.2% up) had also showed positive growth respectively. On the other hand, Office Equipment (9.2% down), Industrial Equipment (14.6% down), and Medical Equipment (14.7% down) had showed negative growth respectively.

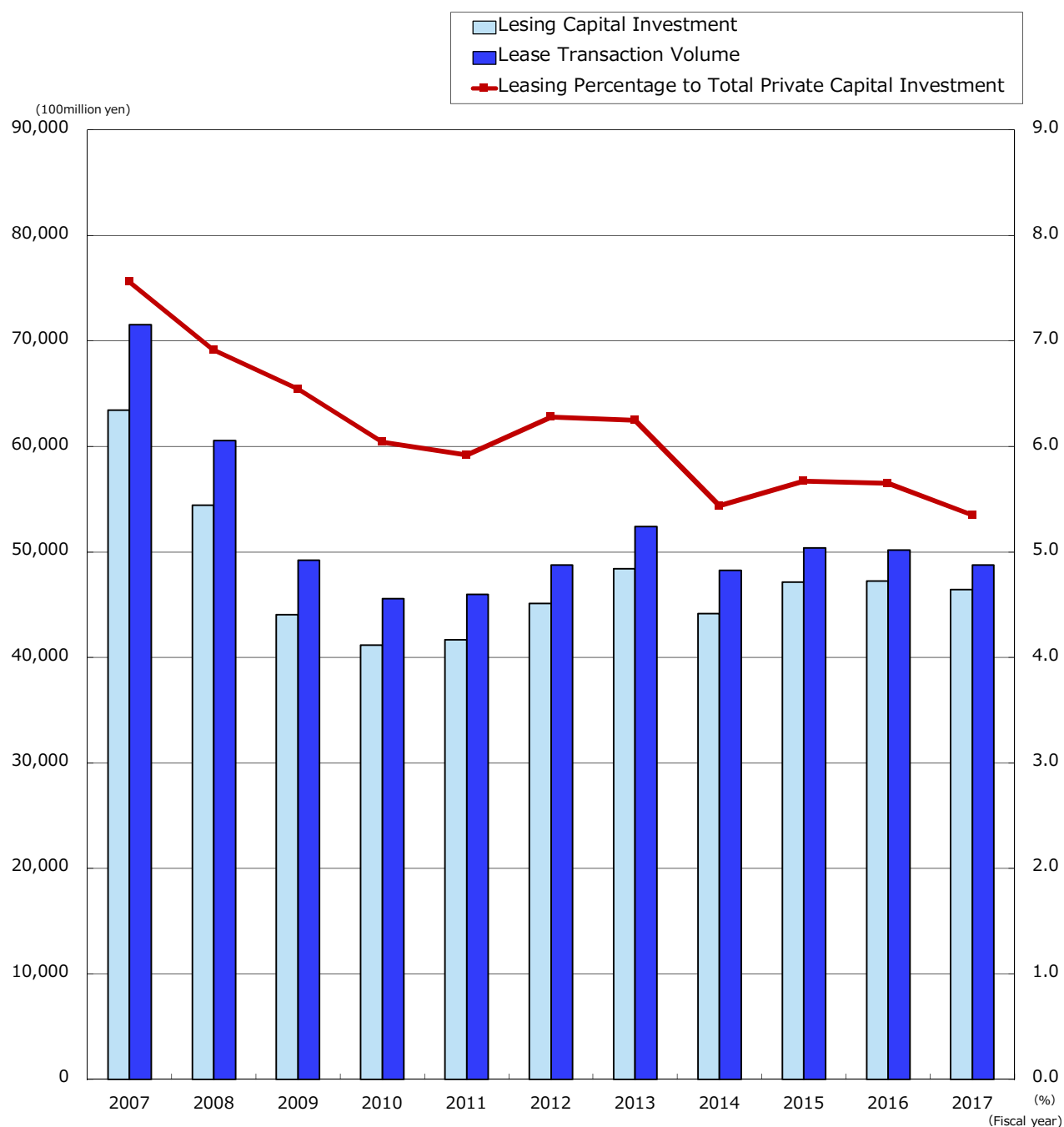
Trends in Lease Transaction Volume, Leasing Capital Investment and Leasing Percentage to Total Private Capital Investment

(Unit: 100 million yen, %)

Fiscal Year	Lease Transaction Volume		Leasing Capital Investment		Total Private Capital Investment		Leasing Percentage (B)/(C)
	(A)	Yearly Change	(B)	Yearly Change	(C)	Yearly Change	
1963	7	—	—	—	46,702	—	—
1964	40	571.4	—	—	54,670	117.1	—
1965	67	167.5	—	—	50,883	93.1	—
1966	109	162.7	—	—	65,160	128.1	—
1967	290	266.1	—	—	84,691	130.0	—
1968	450	155.2	—	—	103,499	122.2	—
1969	1,200	266.7	—	—	135,607	131.0	—
1970	2,106	175.5	—	—	156,685	115.5	—
1971	2,793	132.6	—	—	152,967	97.6	—
1972	3,721	133.2	—	—	168,937	110.4	—
1973	5,279	141.9	—	—	224,299	132.8	—
1974	5,290	100.2	—	—	245,518	109.5	—
1975	5,621	106.3	—	—	243,739	99.3	—
1976	8,127	144.6	—	—	256,077	105.1	—
1977	8,604	105.9	—	—	264,534	103.3	—
1978	10,566	122.8	7,820	—	293,354	110.9	2.67
1979	14,611	138.3	10,330	132.2	340,188	116.0	3.04
1980	15,744	107.8	11,550	111.8	396,807	—	2.91
1981	19,327	122.8	14,342	124.2	413,464	104.2	3.47
1982	23,966	124.0	18,872	131.6	420,013	101.6	4.49
1983	29,927	124.9	23,262	123.3	423,263	100.8	5.50
1984	36,758	122.8	28,843	124.0	477,141	112.7	6.04
1985	43,225	117.6	33,520	116.2	545,560	114.3	6.14
1986	47,575	110.1	37,636	112.3	563,462	103.3	6.68
1987	52,967	111.3	42,089	111.8	600,936	106.7	7.00
1988	67,170	126.8	52,226	124.1	718,103	119.5	7.27
1989	70,649	105.2	57,540	110.2	807,038	112.4	7.13
1990	84,152	119.1	65,420	113.7	920,967	114.1	7.10
1991	88,016	104.6	68,843	105.2	929,323	100.9	7.41
1992	77,742	88.3	62,813	91.2	873,450	94.0	7.19
1993	71,825	92.4	59,780	95.2	751,634	86.1	7.95
1994	73,497	102.3	61,631	103.1	760,614	—	8.10
1995	76,214	103.7	65,804	106.8	814,456	107.1	8.08
1996	82,867	108.7	72,238	109.8	846,709	104.0	8.53
1997	79,304	95.7	70,180	97.2	867,720	102.5	8.09
1998	71,445	90.1	63,150	90.0	825,516	95.1	7.65
1999	74,024	103.6	65,862	104.3	799,162	96.8	8.24
2000	79,457	107.3	69,922	106.2	835,293	104.5	8.37
2001	77,337	97.3	69,148	98.9	779,935	93.4	8.87
2002	73,743	95.4	66,052	95.5	736,525	94.4	8.97
2003	73,778	100.0	65,917	99.8	744,328	101.1	8.86
2004	76,252	103.4	68,086	103.3	767,411	103.1	8.87
2005	79,413	104.1	71,017	104.3	823,386	107.3	8.62
2006	78,677	99.1	71,213	100.3	844,190	102.5	8.44
2007	71,542	90.9	63,420	89.1	838,834	99.4	7.56
2008	60,564	84.7	54,444	85.8	788,413	94.0	6.91
2009	49,219	81.3	44,058	80.9	675,156	85.6	6.53
2010	45,553	92.6	41,161	93.4	681,205	100.9	6.04
2011	45,997	101.0	41,682	101.3	704,111	103.4	5.92
2012	48,754	106.0	45,106	108.2	718,589	102.1	6.28
2013	52,390	107.5	48,411	107.3	774,636	107.8	6.25
2014	48,252	92.1	44,132	91.2	810,515	104.6	5.44
2015	50,393	104.4	47,213	107.0	832,497	102.7	5.67
2016	50,203	99.6	47,248	100.1	836,531	100.5	5.65
2017	48,759	97.1	46,428	98.3	868,207	103.8	5.35

The statistic in FY 2017 is preliminary (released on May 16).

Trends in Lease Transaction Volume, Leasing Capital Investment and Leasing Percentage to Total Private Capital Investment



Fiscal year	2007	2008	2009	2010	2011	2012	2013	2014	2015	2016	2017
Lease Transaction Volume (100million yen)	71,542	60,564	49,219	45,553	45,997	48,754	52,390	48,252	50,393	50,203	48,759
Yearly Change (%)	90.9	84.7	81.3	92.6	101.0	106.0	107.5	92.1	104.4	99.6	97.1
Lease Capital Investment (100million yen)	63,420	54,444	44,058	41,161	41,682	45,106	48,411	44,132	47,213	47,248	46,428
Yearly Change (%)	89.1	85.8	80.9	93.4	101.3	108.2	107.3	91.2	107.0	100.1	98.3
Leasing Percentage to Total Private Capital Investment (%)	7.56	6.91	6.53	6.04	5.92	6.28	6.25	5.44	5.67	5.65	5.35
Corporation Researched	248	241	233	233	230	229	223	221	219	221	221

※Total Private Capital Investment, based upon nominal value, is researched by Cabinet Office. The statistic in FY 2017 is preliminary.

Trends in Lease Transaction Volume by Type of Equipment

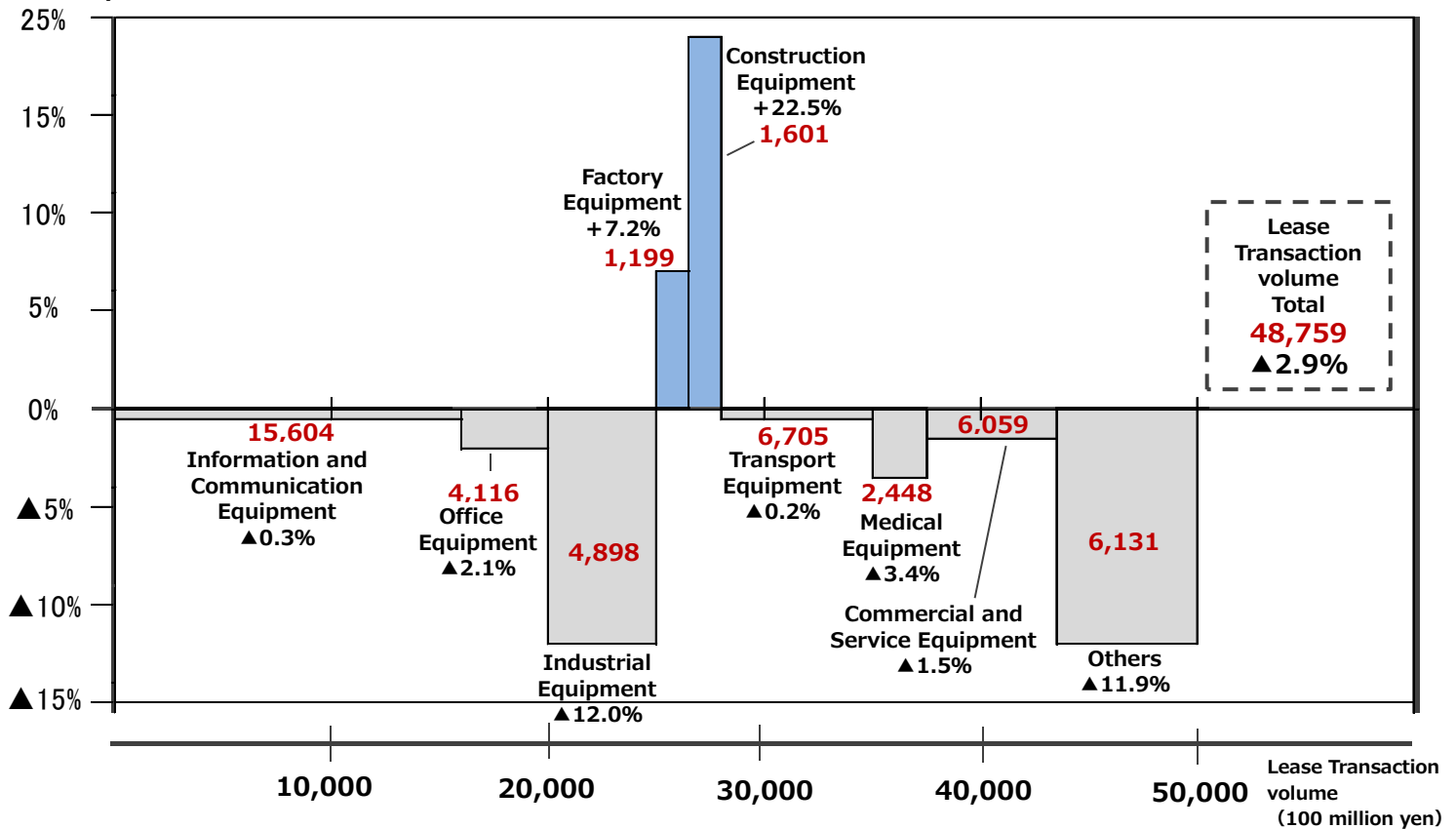
(Unit: in 100 million yen)

		FY 2015		FY 2016		FY 2017		Yearly Change		
		Leasing Volume	Component Ratio (%)	Leasing Volume	Component Ratio (%)	Leasing Volume	Component Ratio (%)	15/14	16/15	17/16
1	Information and Communication Equipment	15,940	31.6	15,648	31.2	15,604	32.0	102.5	98.2	99.7
	Computer Hardware	8,107	16.1	8,248	16.4	8,374	17.2	101.6	101.7	101.5
	Computer Software	3,808	7.6	3,453	6.9	3,350	6.9	103.3	90.7	97.0
	Telecommunication Equipment	4,025	8.0	3,947	7.9	3,880	8.0	103.5	98.1	98.3
2	Office Equipment	4,300	8.5	4,205	8.4	4,116	8.4	97.3	97.8	97.9
3	Industrial Equipment	6,158	12.2	5,565	11.1	4,898	10.0	112.4	90.4	88.0
4	Factory Equipment	1,131	2.2	1,118	2.2	1,199	2.5	129.2	98.8	107.2
5	Construction Equipment	1,373	2.7	1,307	2.6	1,601	3.3	91.2	95.2	122.5
6	Transport Equipment	6,103	12.1	6,716	13.4	6,705	13.8	96.6	110.0	99.8
	Automobile	5,463	10.8	5,968	11.9	5,955	12.2	103.5	109.2	99.8
	Vessel	20	0.0	115	0.2	27	0.1	127.0	579.3	23.5
7	Medical Equipment	2,485	4.9	2,533	5.0	2,448	5.0	109.1	101.9	96.6
8	Commercial and Service Equipment	6,123	12.2	6,150	12.3	6,059	12.4	97.3	100.5	98.5
	Commercial Equipment	4,127	8.2	4,165	8.3	4,296	8.8	94.4	100.9	103.2
9	Others	6,781	13.5	6,959	13.9	6,131	12.6	122.5	102.6	88.1
	Physical and Chemical Equipment	551	1.1	647	1.3	651	1.3	112.4	117.4	100.6
Total		50,393	100.0	50,203	100.0	48,759	100.0	104.4	99.6	97.1
Corporations researched		219		221		221				

Trends in Lease Transaction Volume by type of Equipment (FY2017)

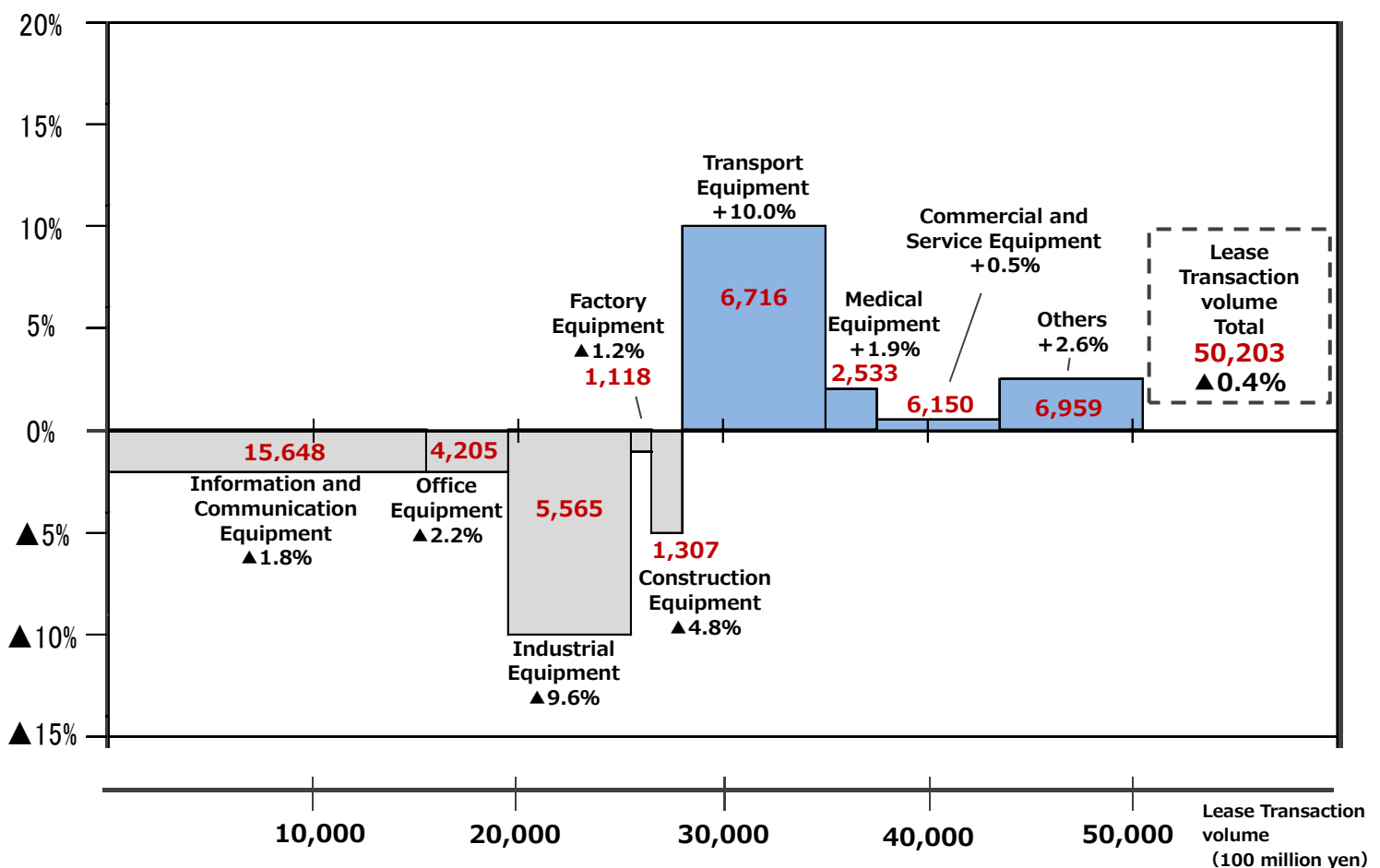
* The numbers in the graph represents(red) the lease transaction volume (100 million yen) .

Year-on-year



< Reference : Trends in Lease Transaction Volume by type of Equipment (FY2016) >

Year-on-year



Trends in Lease Transaction Volume by Size of Lessee

(Unit: in 100 million yen)

		FY 2015		FY 2016		FY 2017		Yearly Change		
		Leasing Volume	Component Ratio (%)	Leasing Volume	Component Ratio (%)	Leasing Volume	Component Ratio (%)	15/14	16/15	17/16
1	Large Companies	19,055	37.8	18,715	37.3	17,125	35.1	96.3	98.2	91.5
	Listed companies	8,079	16.0	8,999	17.9	7,642	15.7	96.0	111.4	84.9
2	Small and Medium Sized Companies	26,035	51.7	25,655	51.1	25,696	52.7	110.2	98.5	100.2
3	Public Sector and Others	5,303	10.5	5,832	11.6	5,937	12.2	109.8	110.0	101.8
Total		50,393	100.0	50,203	100.0	48,759	100.0	104.4	99.6	97.1

Trends in Lease Transaction Volume by Lessee's Business Type

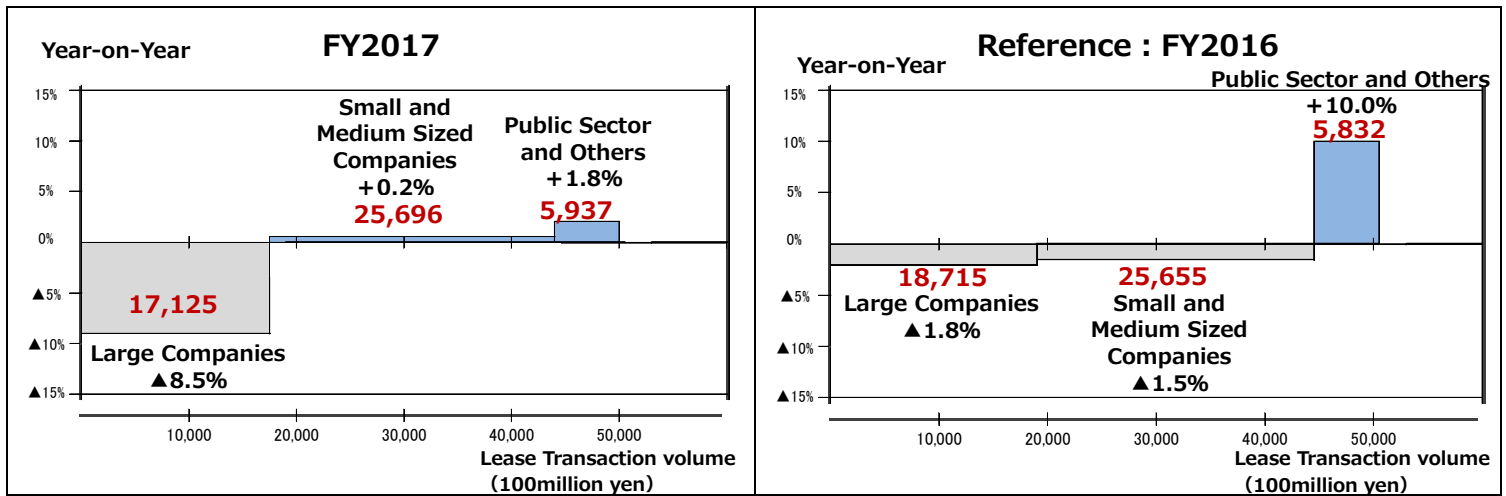
(Unit: in 100 million yen)

		FY 2015		FY 2016		FY 2017		Yearly Change		
		Leasing Volume	Component Ratio (%)	Leasing Volume	Component Ratio (%)	Leasing Volume	Component Ratio (%)	15/14	16/15	17/16
1	Agriculture, Forestry, Fisheries, and Mining and quarrying of stone and gravel	760	1.5	802	1.6	569	1.2	143.8	105.4	71.0
2	Construction	2,729	5.4	2,945	5.9	3,001	6.2	105.0	107.9	101.9
3	Manufacturing	9,819	19.5	9,510	18.9	8,644	17.7	111.5	96.9	90.9
	Manufacture of Food	1,502	3.0	1,482	3.0	1,384	2.8	105.2	98.7	93.4
	Textile mill, Lumber and wood, and Pulp Products	725	1.4	740	1.5	771	1.6	103.8	102.1	104.2
	Chemical and allied, Petroleum and coal, Plastic Products	884	1.8	944	1.9	793	1.6	94.8	106.8	84.1
	Iron and Steel, Non-ferrous Metal, and Fabricated Metal Products	1,139	2.3	1,087	2.2	1,144	2.3	105.4	95.4	105.3
	Production, Electrical, Information and Communication, Transportation Machinery	4,351	8.6	4,158	8.3	3,476	7.1	126.6	95.6	83.6
	Others	1,218	2.4	1,099	2.2	1,076	2.2	98.6	90.3	97.9
4	Non-manufacturing	32,632	64.8	31,298	62.3	30,944	63.5	102.8	95.9	98.9
	Electricity, Gas, Heat supply and Water	806	1.6	671	1.3	1,322	2.7	138.1	83.2	197.0
	Information and Communications	2,567	5.1	2,419	4.8	2,652	5.4	101.5	94.3	109.6
	Transport and Postal activities	2,992	5.9	2,931	5.8	2,840	5.8	107.5	98.0	96.9
	Wholesale and Retail trade	8,736	17.3	8,972	17.9	8,768	18.0	95.3	102.7	97.7
	Finance and Insurance	1,247	2.5	1,197	2.4	1,104	2.3	106.2	96.0	92.3
	Real estate, Goods rental, and Leasing	3,739	7.4	3,083	6.1	2,648	5.4	104.3	82.5	85.9
	Accommodations, Eating and services	1,158	2.3	1,083	2.2	1,141	2.3	119.6	93.5	105.4
	Medical, Health care and Welfare	3,779	7.5	3,428	6.8	3,618	7.4	116.3	90.7	105.5
	Services, N.E.C.	7,609	15.1	7,513	15.0	6,851	14.0	98.9	98.7	91.2
5	Government, Except elsewhere classified	4,452	8.8	5,649	11.3	5,601	11.5	97.2	126.9	99.2
Total		50,393	100.0	50,203	100.0	48,759	100.0	104.4	99.6	97.1

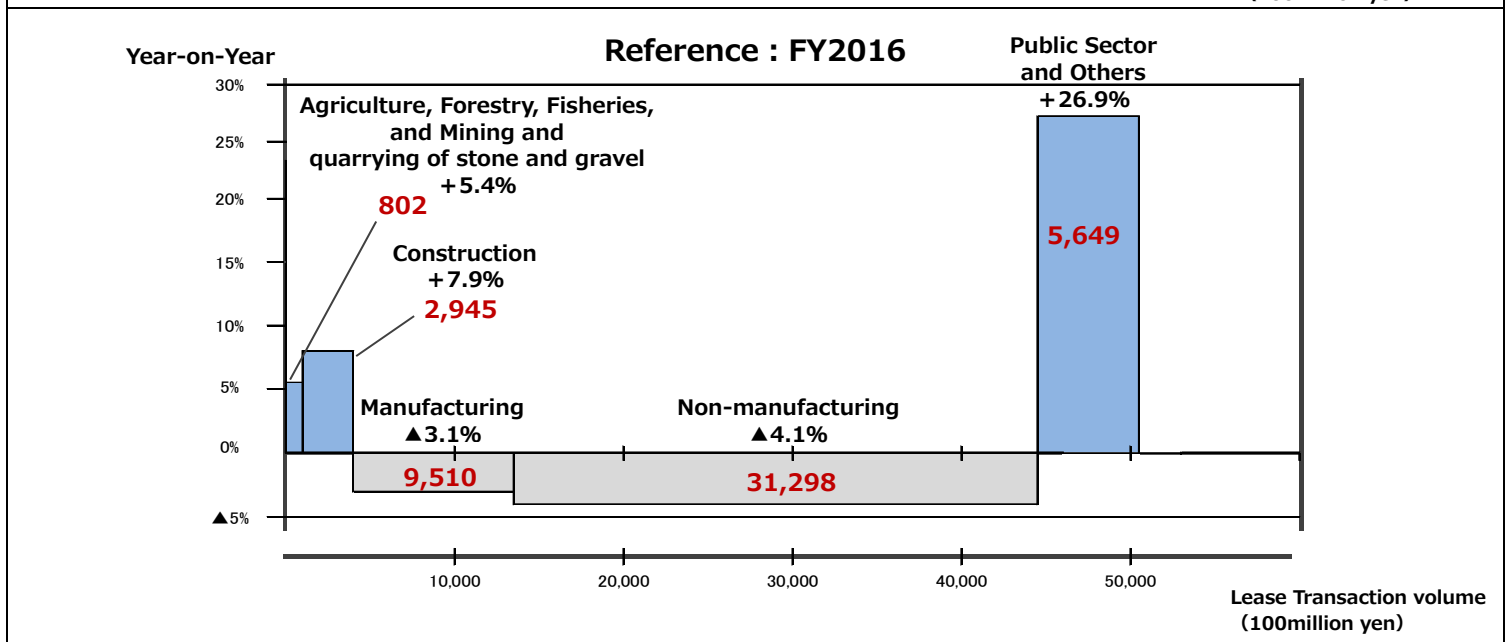
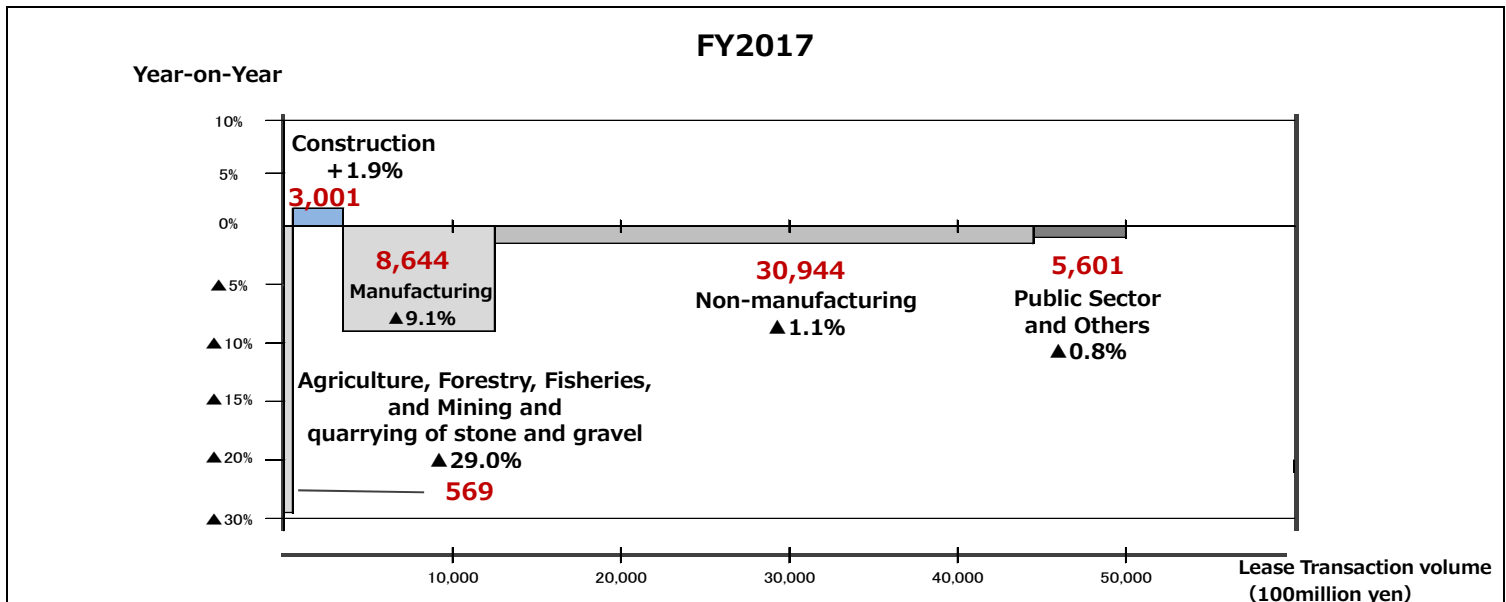
Trends in Lease Transaction Volume by Size of Lessee and Lessee's Business Type

*The numbers in the graph represents(red) the lease transaction volume (100 million yen) .

<Trends in Lease Transaction Volume by Size of Lessee>

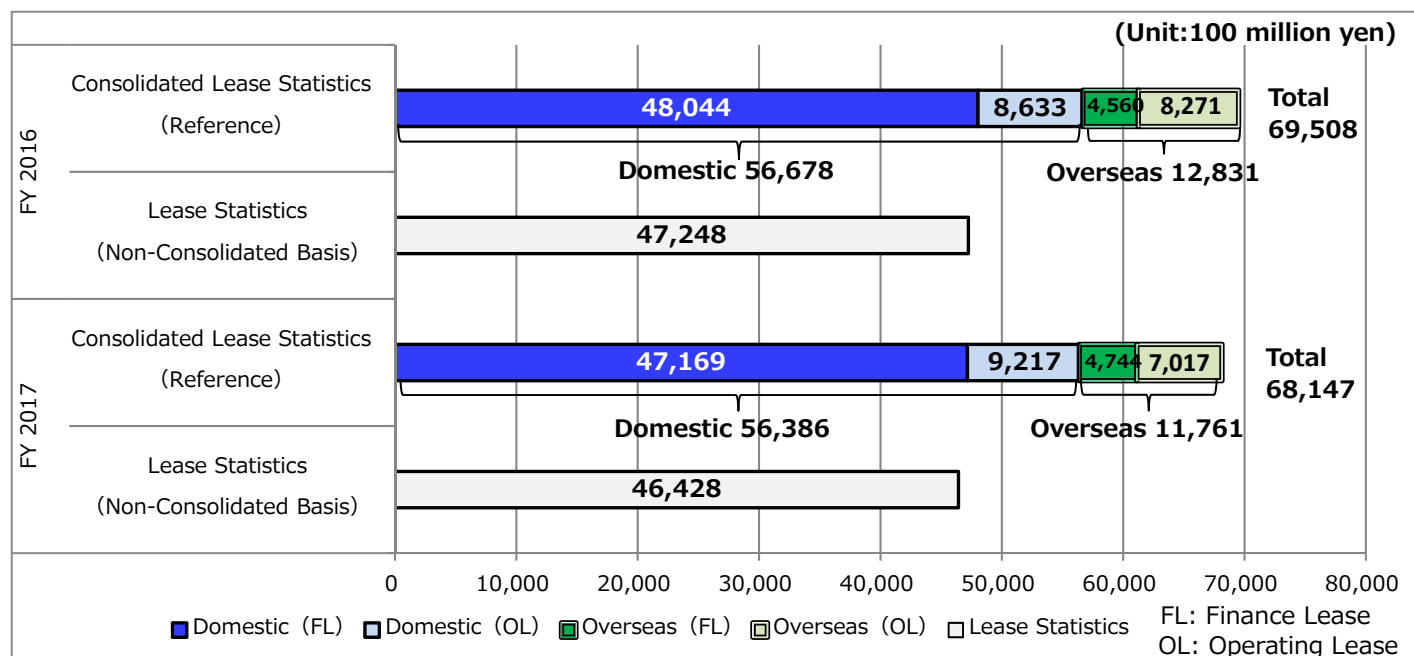


<Trends in Lease Transaction Volume by Lessee's Business Type>



(Reference) Consolidated Lease Statistics Survey Results (FY2017)

- ◆ A statistical survey was taken with regard to the transaction status of finance leases and operating leases in Japan and overseas on a consolidated basis including subsidiaries, the results of which are as shown (Based on leasing capital investment amounts [For reference]).



[FY2017 Leasing capital investment statistics (Consolidated basis)]

		Leasing capital investment (100 million yen)	Domestic and overseas composition ratio (%)	Grand total composition ratio (%)	Year-on-year Change (%)	(Reference) The previous year's total (100 million yen)
Domestic	Finance Lease	47,169	83.7	69.2	98.2	48,044
	Operating Lease	9,217	16.3	13.5	106.8	8,633
	Total	56,386	100.0	82.7	99.5	56,678
Overseas	Finance Lease	4,744	40.3	7.0	104.0	4,560
	Operating Lease	7,017	59.7	10.3	84.8	8,271
	Total	11,761	100.0	17.3	91.7	12,831
Grand Total		68,147	-	100.0	98.0	69,508

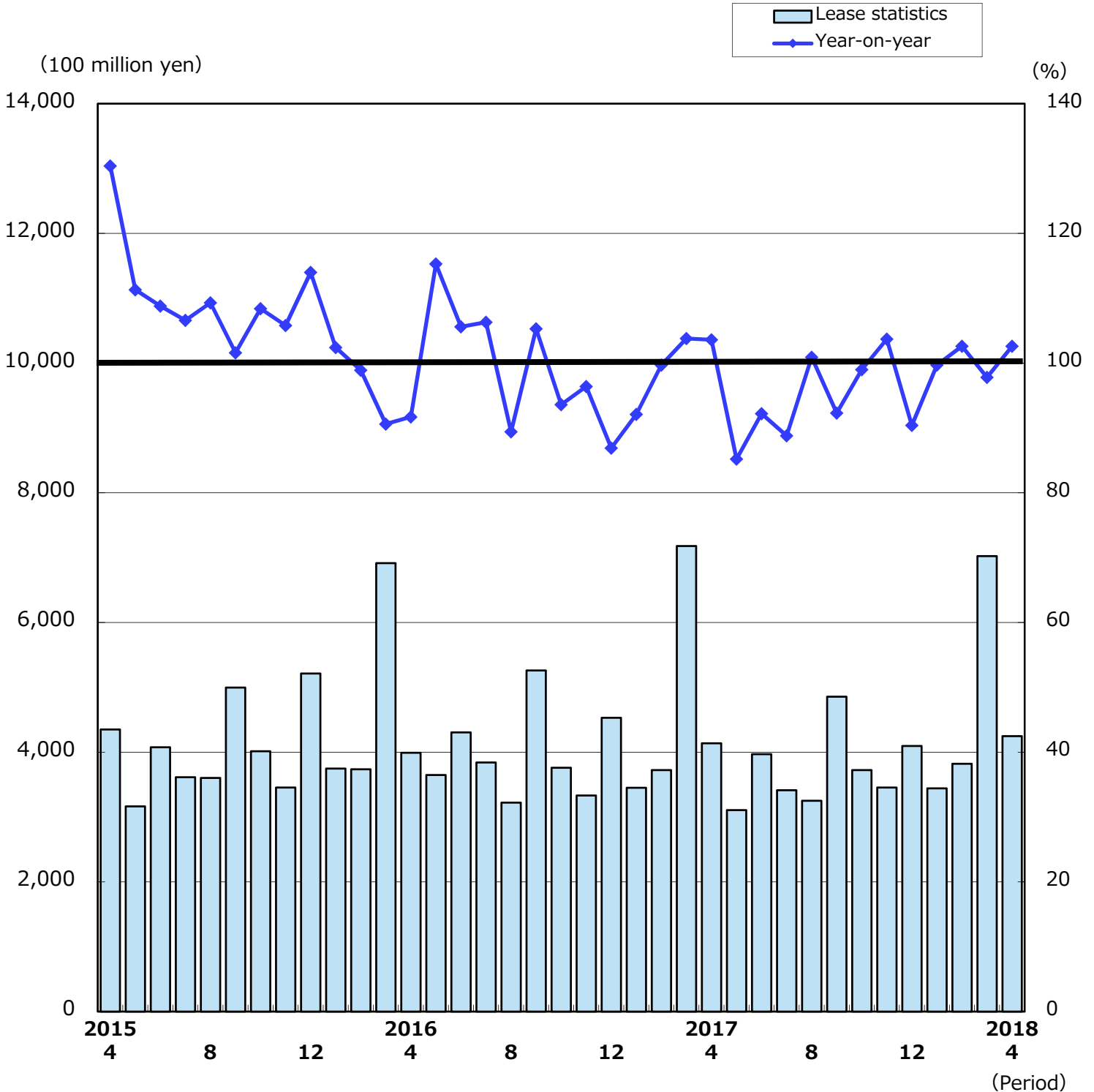
- ※1 Companies subject to the survey were the 27 companies to which the Association's directors and auditors belong (of which 21 companies were included in the statistics).
- ※2 Calculated by adding the survey results, i.e. consolidated lease statistics (after adjustment for duplication) to the non-consolidated lease statistics.
- ※3 Finance leases are lease transactions which meet the two requirements of (1) Cancellation during the lease term is prohibited (Prohibition of early termination) and (2) Nearly the entire amount (more than 90%) of the price of the property and ancillary costs may be recovered through lease payments.
- ※4 Operating leases are lease transactions other than finance leases.

Lease Statistics (Apr.2018)

(Overview)

- The lease transaction volume in April 2018 is 424.7 billion yen, increased by 2.6%, and increased for the first time in 2 months.
- Information and Communication Equipment (8.2% up), Factory Equipment (13.0% up), Construction Equipment (10.7% up), Transport Equipment (9.0% up), Commercial Equipment (1.2% up) increased.
- Office Equipment (9.2% down), Industrial Equipment (14.6% down), Medical Equipment (14.7% down) decreased.

Changes in Lease Monthly Transaction Volume (2015.4-2018.4)



Leasing Volume by Type of Equipment (Apr. 2018)

		Leasing cases	Component Ratio (%)	Year-on-year Change (%)	Leasing Volume (in million yen)	Component Ratio (%)	Year-on-year Change (%)
1	Information and Communication Equipment	68,528	42.9	102.1	149,279.7	35.2	108.2
	Computer Hardware	(48,250)	(30.2)	(104.8)	(82,342.6)	(19.4)	(107.0)
	Computer Software	(6,115)	(3.8)	(85.6)	(37,186.5)	(8.8)	(109.6)
	Telecommunication Equipment	(14,163)	(8.9)	(101.6)	(29,750.6)	(7.0)	(109.8)
2	Office Equipment	28,037	17.6	77.7	36,390.7	8.6	90.8
3	Industrial Equipment	5,867	3.7	48.1	31,112.2	7.3	85.4
4	Factory Equipment	402	0.3	105.5	7,107.7	1.7	113.0
5	Construction Equipment	833	0.5	105.0	9,427.5	2.2	110.7
6	Transport Equipment	18,743	11.7	112.3	54,952.9	12.9	109.0
	Automobile	(17,293)	(10.8)	(113.2)	(46,337.7)	(10.9)	(105.7)
	Vessel	(13)	(0.0)	(118.2)	(390.5)	(0.1)	(159.8)
7	Medical Equipment	5,946	3.7	99.2	21,335.9	5.0	85.3
8	Commercial and Service Equipment	20,891	13.1	70.7	52,937.2	12.5	101.2
	Commercial Equipment	(16,543)	(10.4)	(65.9)	(36,606.7)	(8.6)	(96.7)
9	Others	10,330	6.5	88.0	62,128.4	14.6	109.5
	Physical and Chemical Equipment	(1,426)	(0.9)	(110.0)	(5,424.5)	(1.3)	(121.6)
Total		159,577	100.0	88.4	424,672.2	100.0	102.6

【Corporations researched: 209】

Changes in Lease Transaction Volume

Unit: in 100 Million Yen, Yearly Changes: Parenthesized

	Total	Information and Communication Equipment			Office Equipment	Industry Equipment	Factory Equipment	Construction Equipment	Transport Equipment		Medical Equipment	Commercial and Service Equipment		Others				
		Computer Hardware	Computer Software	Telecommunication Equipment					Automobile	Vessel		Commercial Equipment	Physical and Chemical Equipment					
Calendar Year	2015	51,563 (▲ 3.6)	15,945 (▲ 3.2)	8,180 (▲ 7.3)	3,800 (▲ 7.9)	3,965 (▲ 12.6)	4,404 (▲ 2.2)	6,646 (▲ 34.2)	1,156 (▲ 17.8)	1,418 (▲ 9.1)	6,521 (▲ 1.4)	5,787 (▲ 7.4)	17 (▲ 18.9)	2,489 (▲ 9.7)	6,257 (▲ 2.8)	4,246 (▲ 0.4)	6,727 (▲ 18.0)	539 (▲ 0.7)
	2016	50,294 (▲ 2.5)	15,411 (▲ 3.4)	7,934 (▲ 3.0)	3,481 (▲ 8.4)	3,996 (▲ 0.8)	4,204 (▲ 4.6)	5,878 (▲ 11.6)	1,049 (▲ 9.2)	1,356 (▲ 4.4)	6,561 (▲ 0.6)	5,830 (▲ 0.7)	111 (▲ 546.2)	2,572 (▲ 3.3)	6,225 (▲ 0.5)	4,107 (▲ 3.3)	7,039 (▲ 4.6)	607 (▲ 12.6)
	2017	48,368 (▲ 3.8)	15,582 (▲ 1.1)	8,198 (▲ 3.3)	3,522 (▲ 1.2)	3,862 (▲ 3.4)	4,211 (▲ 0.2)	4,769 (▲ 18.9)	1,230 (▲ 17.2)	1,439 (▲ 6.1)	6,613 (▲ 0.8)	5,877 (▲ 0.8)	29 (▲ 73.7)	2,491 (▲ 3.1)	6,055 (▲ 2.7)	4,299 (▲ 4.7)	5,977 (▲ 15.1)	642 (▲ 5.8)
Fiscal Year (Final Figures)	2015	50,393 (▲ 4.4)	15,940 (▲ 2.5)	8,107 (▲ 1.6)	3,808 (▲ 3.3)	4,025 (▲ 3.5)	4,300 (▲ 2.7)	6,158 (▲ 12.4)	1,131 (▲ 29.2)	1,373 (▲ 8.8)	6,103 (▲ 3.4)	5,463 (▲ 3.5)	20 (▲ 27.0)	2,485 (▲ 9.1)	6,123 (▲ 2.7)	4,127 (▲ 5.6)	6,781 (▲ 22.5)	551 (▲ 12.4)
	2016	50,203 (▲ 0.4)	15,648 (▲ 1.8)	8,248 (▲ 1.7)	3,453 (▲ 9.3)	3,947 (▲ 1.9)	4,205 (▲ 2.2)	5,565 (▲ 9.6)	1,118 (▲ 1.2)	1,307 (▲ 4.8)	6,716 (▲ 10.0)	5,968 (▲ 9.2)	115 (▲ 479.3)	2,533 (▲ 1.9)	6,150 (▲ 0.5)	4,165 (▲ 0.9)	6,959 (▲ 2.6)	647 (▲ 17.4)
	2017	48,759 (▲ 2.9)	15,604 (▲ 0.3)	8,374 (▲ 1.5)	3,350 (▲ 3.0)	3,880 (▲ 1.7)	4,116 (▲ 2.1)	4,898 (▲ 12.0)	1,199 (▲ 7.2)	1,601 (▲ 22.5)	6,705 (▲ 0.2)	5,955 (▲ 0.2)	27 (▲ 76.5)	2,448 (▲ 3.4)	6,059 (▲ 1.5)	4,296 (▲ 3.2)	6,131 (▲ 11.9)	651 (▲ 0.6)
Half Year	'16 4-9	24,271 (▲ 2.0)	6,964 (▲ 5.2)	3,662 (▲ 5.3)	1,411 (▲ 13.2)	1,891 (▲ 2.1)	2,131 (▲ 1.2)	2,913 (▲ 3.0)	466 (▲ 4.1)	566 (▲ 1.5)	3,288 (▲ 4.7)	2,911 (▲ 2.2)	100 (▲ 969.9)	1,339 (▲ 7.5)	3,249 (▲ 1.2)	2,066 (▲ 3.4)	3,356 (▲ 18.3)	309 (▲ 17.0)
	10-3	25,979 (▲ 4.1)	8,501 (▲ 0.3)	4,530 (▲ 6.6)	2,035 (▲ 6.8)	1,936 (▲ 7.6)	2,104 (▲ 1.8)	2,654 (▲ 20.8)	674 (▲ 1.5)	792 (▲ 4.3)	3,315 (▲ 0.0)	2,975 (▲ 0.2)	15 (▲ 48.5)	1,198 (▲ 3.5)	3,032 (▲ 3.5)	2,073 (▲ 4.2)	3,709 (▲ 8.8)	322 (▲ 15.5)
	'17 4-9	22,735 (▲ 6.3)	6,896 (▲ 1.0)	3,594 (▲ 1.9)	1,428 (▲ 1.2)	1,874 (▲ 0.9)	2,088 (▲ 2.0)	2,391 (▲ 17.9)	534 (▲ 14.7)	650 (▲ 14.8)	3,229 (▲ 1.8)	2,863 (▲ 1.6)	13 (▲ 87.1)	1,291 (▲ 3.6)	3,067 (▲ 5.6)	2,197 (▲ 5.3)	2,590 (▲ 22.8)	294 (▲ 4.9)
10-3	25,565 (▲ 1.6)	8,527 (▲ 0.3)	4,709 (▲ 3.9)	1,939 (▲ 4.7)	1,880 (▲ 2.9)	2,035 (▲ 3.3)	2,491 (▲ 6.1)	675 (▲ 0.0)	766 (▲ 3.3)	3,401 (▲ 2.6)	2,995 (▲ 0.7)	16 (▲ 3.1)	1,189 (▲ 0.7)	2,954 (▲ 2.6)	2,047 (▲ 1.3)	3,527 (▲ 4.9)	342 (▲ 6.2)	
Quarter Year	'16 4-6	11,946 (▲ 3.0)	3,346 (▲ 8.7)	1,754 (▲ 8.5)	659 (▲ 16.6)	933 (▲ 2.7)	1,069 (▲ 3.4)	1,357 (▲ 6.7)	179 (▲ 12.6)	249 (▲ 2.4)	1,595 (▲ 4.5)	1,387 (▲ 0.8)	89 (▲ 1,579.0)	719 (▲ 9.9)	1,588 (▲ 0.8)	1,033 (▲ 5.8)	1,844 (▲ 37.1)	157 (▲ 18.2)
	7-9	12,326 (▲ 0.9)	3,618 (▲ 1.7)	1,908 (▲ 2.1)	751 (▲ 10.1)	959 (▲ 7.3)	1,061 (▲ 1.1)	1,556 (▲ 0.0)	287 (▲ 2.1)	317 (▲ 0.8)	1,692 (▲ 5.0)	1,524 (▲ 3.5)	10 (▲ 155.1)	620 (▲ 4.8)	1,661 (▲ 1.5)	1,053 (▲ 1.0)	1,512 (▲ 1.3)	152 (▲ 15.7)
	10-12	11,624 (▲ 8.4)	3,407 (▲ 2.3)	1,833 (▲ 1.3)	696 (▲ 14.0)	877 (▲ 1.2)	968 (▲ 6.6)	1,346 (▲ 22.3)	293 (▲ 25.7)	438 (▲ 7.9)	1,537 (▲ 2.6)	1,364 (▲ 3.6)	5 (▲ 34.9)	560 (▲ 1.6)	1,516 (▲ 3.2)	1,011 (▲ 3.1)	1,559 (▲ 19.8)	154 (▲ 13.9)
'17 1-3	4-6	14,355 (▲ 0.3)	5,094 (▲ 1.1)	2,697 (▲ 10.6)	1,339 (▲ 2.6)	1,058 (▲ 13.8)	1,136 (▲ 2.8)	1,308 (▲ 19.2)	381 (▲ 31.3)	355 (▲ 0.6)	1,778 (▲ 2.4)	1,611 (▲ 3.6)	11 (▲ 55.5)	638 (▲ 5.2)	1,515 (▲ 3.8)	1,062 (▲ 5.2)	2,150 (▲ 1.2)	168 (▲ 16.9)
	7-9	11,214 (▲ 6.1)	3,396 (▲ 1.5)	1,708 (▲ 2.6)	756 (▲ 14.6)	932 (▲ 0.0)	1,061 (▲ 0.8)	1,195 (▲ 11.9)	233 (▲ 30.3)	262 (▲ 5.3)	1,562 (▲ 2.1)	1,359 (▲ 2.0)	7 (▲ 92.7)	723 (▲ 0.4)	1,501 (▲ 5.4)	1,078 (▲ 4.3)	1,281 (▲ 30.5)	130 (▲ 17.4)
	10-12	11,522 (▲ 6.5)	3,499 (▲ 3.3)	1,885 (▲ 1.2)	672 (▲ 10.6)	942 (▲ 1.8)	1,027 (▲ 3.2)	1,197 (▲ 23.1)	302 (▲ 5.0)	388 (▲ 22.3)	1,667 (▲ 1.5)	1,504 (▲ 1.3)	6 (▲ 37.7)	568 (▲ 8.3)	1,566 (▲ 5.8)	1,118 (▲ 6.2)	1,308 (▲ 13.5)	164 (▲ 7.9)
'18 1-3	4-6	11,278 (▲ 3.0)	3,593 (▲ 5.5)	1,908 (▲ 4.1)	756 (▲ 8.5)	929 (▲ 5.9)	987 (▲ 2.0)	1,070 (▲ 20.5)	314 (▲ 7.1)	435 (▲ 0.6)	1,606 (▲ 4.5)	1,403 (▲ 2.9)	6 (▲ 23.5)	562 (▲ 0.4)	1,473 (▲ 2.9)	1,040 (▲ 2.9)	1,238 (▲ 20.6)	181 (▲ 17.0)
	7-9	14,287 (▲ 0.5)	4,934 (▲ 3.1)	2,801 (▲ 3.9)	1,184 (▲ 11.6)	950 (▲ 10.2)	1,048 (▲ 7.8)	1,421 (▲ 8.7)	361 (▲ 5.4)	332 (▲ 6.6)	1,795 (▲ 0.9)	1,592 (▲ 1.2)	10 (▲ 5.9)	628 (▲ 1.6)	1,481 (▲ 2.3)	1,007 (▲ 5.2)	2,289 (▲ 6.5)	162 (▲ 3.8)
	10-12	14,287 (▲ 0.5)	4,934 (▲ 3.1)	2,801 (▲ 3.9)	1,184 (▲ 11.6)	950 (▲ 10.2)	1,048 (▲ 7.8)	1,421 (▲ 8.7)	361 (▲ 5.4)	332 (▲ 6.6)	1,795 (▲ 0.9)	1,592 (▲ 1.2)	10 (▲ 5.9)	628 (▲ 1.6)	1,481 (▲ 2.3)	1,007 (▲ 5.2)	2,289 (▲ 6.5)	162 (▲ 3.8)
Monthly	'17 4	4,137 (▲ 3.6)	1,380 (▲ 2.7)	769 (▲ 5.3)	339 (▲ 7.4)	271 (▲ 8.7)	401 (▲ 3.1)	364 (▲ 1.6)	63 (▲ 17.4)	85 (▲ 4.0)	504 (▲ 5.8)	439 (▲ 2.3)	2 (▲ 42.5)	250 (▲ 11.9)	523 (▲ 7.1)	378 (▲ 13.5)	568 (▲ 28.3)	45 (▲ 20.3)
	5	3,107 (▲ 14.8)	760 (▲ 10.3)	419 (▲ 16.6)	140 (▲ 1.7)	201 (▲ 0.6)	291 (▲ 3.2)	430 (▲ 56.3)	73 (▲ 42.3)	84 (▲ 20.0)	504 (▲ 8.1)	413 (▲ 4.5)	2 (▲ 36.4)	229 (▲ 8.3)	468 (▲ 10.4)	332 (▲ 0.4)	269 (▲ 70.2)	40 (▲ 7.1)
	6	3,969 (▲ 7.8)	1,257 (▲ 8.8)	520 (▲ 0.2)	276 (▲ 37.8)	461 (▲ 6.2)	370 (▲ 2.8)	401 (▲ 44.6)	97 (▲ 31.3)	92 (▲ 4.3)	554 (▲ 15.2)	508 (▲ 3.5)	2 (▲ 97.2)	244 (▲ 8.7)	510 (▲ 1.7)	368 (▲ 0.3)	445 (▲ 10.5)	45 (▲ 22.0)
	7	3,414 (▲ 11.2)	929 (▲ 6.1)	498 (▲ 8.1)	181 (▲ 11.5)	251 (▲ 2.8)	345 (▲ 3.2)	391 (▲ 24.8)	81 (▲ 7.0)	118 (▲ 47.1)	544 (▲ 0.3)	495 (▲ 1.1)	2 (▲ 52.3)	163 (▲ 1.0)	506 (▲ 10.3)	354 (▲ 6.6)	337 (▲ 37.4)	52 (▲ 16.0)
	8	3,252 (▲ 0.9)	939 (▲ 6.7)	558 (▲ 11.3)	169 (▲ 4.5)	212 (▲ 5.0)	290 (▲ 3.3)	324 (▲ 14.1)	68 (▲ 23.8)	102 (▲ 8.5)	541 (▲ 11.5)	482 (▲ 11.9)	4 (▲ 101.1)	164 (▲ 9.8)	510 (▲ 1.6)	376 (▲ 10.3)	314 (▲ 6.3)	50 (▲ 8.1)
	9	4,856 (▲ 7.7)	1,631 (▲ 6.7)	830 (▲ 4.1)	323 (▲ 12.9)	479 (▲ 6.6)	391 (▲ 3.2)	482 (▲ 26.9)	154 (▲ 37.0)	168 (▲ 17.5)	582 (▲ 12.5)	527 (▲ 12.6)	1 (▲ 87.3)	241 (▲ 11.6)	549 (▲ 5.1)	389 (▲ 2.3)	658 (▲ 3.0)	62 (▲ 1.8)
	10	3,724 (▲ 1.0)	1,310 (▲ 2.1)	726 (▲ 0.7)	307 (▲ 10.4)	277 (▲ 1.2)	342 (▲ 3.1)	348 (▲ 15.5)	96 (▲ 16.4)	136 (▲ 1.5)	471 (▲ 4.5)	419 (▲ 3.4)	1 (▲ 69.0)	188 (▲ 3.9)	447 (▲ 7.1)	313 (▲ 14.3)	386 (▲ 5.1)	72 (▲ 16.0)
	11	3,456 (▲ 3.7)	1,049 (▲ 9.3)	567 (▲ 4.2)	212 (▲ 8.6)	269 (▲ 22.9)	302 (▲ 2.2)	302 (▲ 7.5)	98 (▲ 22.4)	158 (▲ 1.8)	521 (▲ 0.7)	456 (▲ 2.7)	0 (▲ 89.8)	158 (▲ 5.4)	463 (▲ 1.5)	335 (▲ 7.1)	405 (▲ 5.8)	51 (▲ 15.9)
	12	4,097 (▲ 9.6)	1,234 (▲ 6.0)	615 (▲ 10.3)	236 (▲ 6.1)	383 (▲ 0.4)	343 (▲ 0.7)	420 (▲ 35.7)	120 (▲ 8.1)	141 (▲ 2.3)	614 (▲ 18.3)	528 (▲ 14.3)	4 (▲ 320.5)	216 (▲ 0.8)	562 (▲ 12.4)	392 (▲ 7.6)	446 (▲ 38.2)	58 (▲ 19.4)
	'18 1	3,442 (▲ 0.3)	1,412 (▲ 0.9)	917 (▲ 14.9)	290 (▲ 26.2)	205 (▲ 1.7)	283 (▲ 7.6)	303 (▲ 10.8)	94 (▲ 19.8)	82 (▲ 21.9)	401 (▲ 0.5)	359 (▲ 3.1)	2 (▲ 4.2)	154 (▲ 1.6)	414 (▲ 5.1)	286 (▲ 3.0)	298 (▲ 11.1)	46 (▲ 8.9)
	2	3,822 (▲ 2.6)	1,244 (▲ 7.4)	663 (▲ 4.2)	320 (▲ 29.5)	261 (▲ 5.1)	289 (▲ 8.8)	585 (▲ 69.7)	100 (▲ 1.5)	82 (▲ 16.3)	533 (▲ 9.4)	459 (▲ 3.7)	5 (▲ 169.8)	162 (▲ 4.9)	400 (▲ 3.0)	273 (▲ 7.1)	426 (▲ 34.4)	45 (▲ 3.7)
	3	7,023 (▲ 2.2)	2,278 (▲ 10.1)	1,221 (▲ 3.3)	573 (▲ 17.9)	484 (▲ 15.8)	475 (▲ 7.3)	533 (▲ 22.7)	167 (▲ 17.1)	168 (▲ 10.3)	861 (▲ 3.5)	774 (▲ 5.7)	3 (▲ 56.1)	311 (▲ 8.2)	667 (▲ 0.0)	448 (▲ 5.4)	1,565 (▲ 30.5)	71 (▲ 10.5)
4	4,247 (▲ 2.6)	1,493 (▲ 8.2)	823 (▲ 7.0)	372 (▲ 9.6)	298 (▲ 9.8)	364 (▲ 9.2)	311 (▲ 14.6)	71 (▲ 13.0)	94 (▲ 10.7)	550 (▲ 9.0)	463 (▲ 5.7)	4 (▲ 59.8)	213 (▲ 14.7)	529 (▲ 1.2)	366 (▲ 3.3)	621 (▲ 9.5)	54 (▲ 21.6)	

Rounding off to hundreds of millions yen, the figure of the total column may not correspond to the inclusive sum of each item in the table. Also, the figure of information-related device may not correspond to the inclusive sum of its breakdown.