

## **Lease Statistics (FY 2011)**

### **◆ Outline**

The total lease transaction volume in FY 2011 is 4,599.7 billion yen, increased by 1.0%, compared with the volume in FY 2010 <corporations researched: 230>.

Leasing percentage to total private capital investment is 6.77%, and this indicates that leasing plays a role of approximate 7% of the total private capital investment.

With respect to type of equipment, Factory Equipment, Construction Equipment, Transport Equipment and Medical Equipment have turned to positive growth, while Information and Communication Equipment, Industrial Equipment, and Commercial and Service Equipment have continuously showed negative growth respectively. In regard to type of lessee's size, "Small and Medium sized Companies" has been increasing, while "Large Companies" has continuously decreased. In regard to type of lessee's business, both "Manufacturing" and "Non-Manufacturing" has tuned to positive growth respectively.

### **◆ Leasing Percentage**

Leasing Percentage (ratio of leasing capital investment to the total private capital investment) in FY 2011 is 6.77%, and leasing plays a role of approximate 7% of the total private capital investment.

### **◆ Lease Transaction Volume by Type of Equipment**

Factory Equipment (20.2% up), and Construction Equipment (40.6% up) have showed sharp increases. In addition, Transport Equipment (5.2% up), and Medical Equipment (1.8% up), have also turned to positive growth. On the other hand, Information and Communication Equipment (0.6% down) has showed negative growth in a row of 7 years, although Computer Software (8.1% up) and Telecommunication Equipment (7.6% up) have respectively increased. Commercial and Service Equipment (3.7% down) has also showed negative growth in a row of 6 years. In addition, Office Equipment (2.5% down) has turned to negative growth.

### **◆ Lease Transaction Volume by Size of Lessee and Lessee's Business Type**

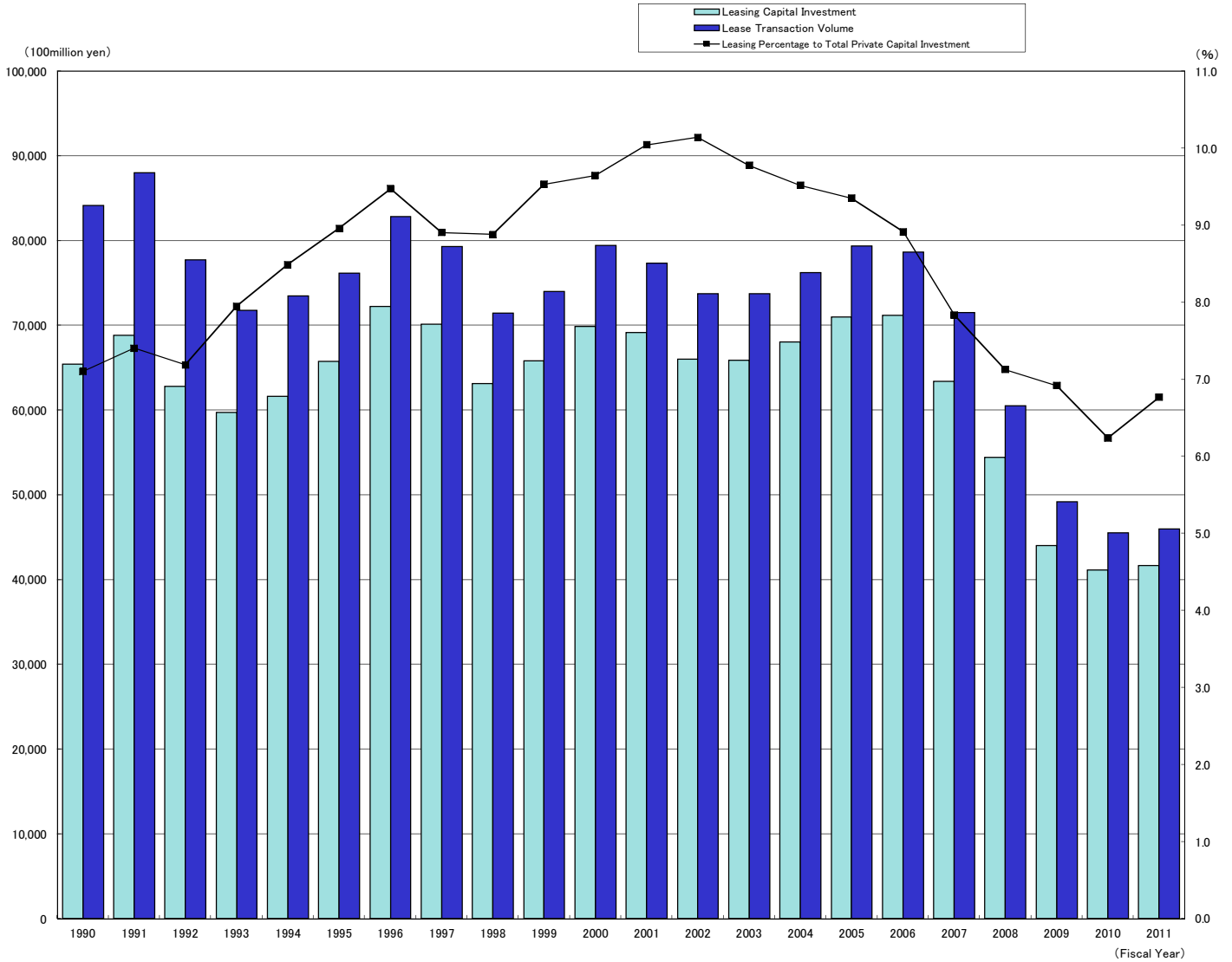
"Small and Medium Sized Companies" (companies with capital 0.1 billion yen and less or solo proprietors) has showed positive growth (4.3% up) since FY 2010, while "Large Companies" (companies with capital over 0.1 billion yen) has showed negative growth (1.8% down) in a row of 6 years. The component ratio of "Small and Medium Sized Companies" is 48.5%, and that of "Large Companies" is 43.3%. The ratio of "Small and Medium Sized Companies" exceeds that of "Large Companies" in a row of 2 years.

"Non-Manufacturing" (0.6% up) has turned to slightly positive growth for the first time in 5 years, and "Manufacturing" (1.4% up) has also turned to positive growth for the first time in 6 years.

### **Lease Statistics (April 2012)**

Lease transaction volume in April 2012 is 424.9 billion yen, increased by 0.6%. With respect to the type of equipment, Information and Communication Equipment (17.2% up), Construction Equipment (36.1% up), and Transport Equipment (41.4% up) have respectively showed a double-digit increase. In addition, Office Equipment (4.7% up), and Commercial and Service Equipment (9.8 % up) have turned to positive growth. On the other hand, Industrial Equipment (48.4% down) has showed negative growth in a row of 2 months.

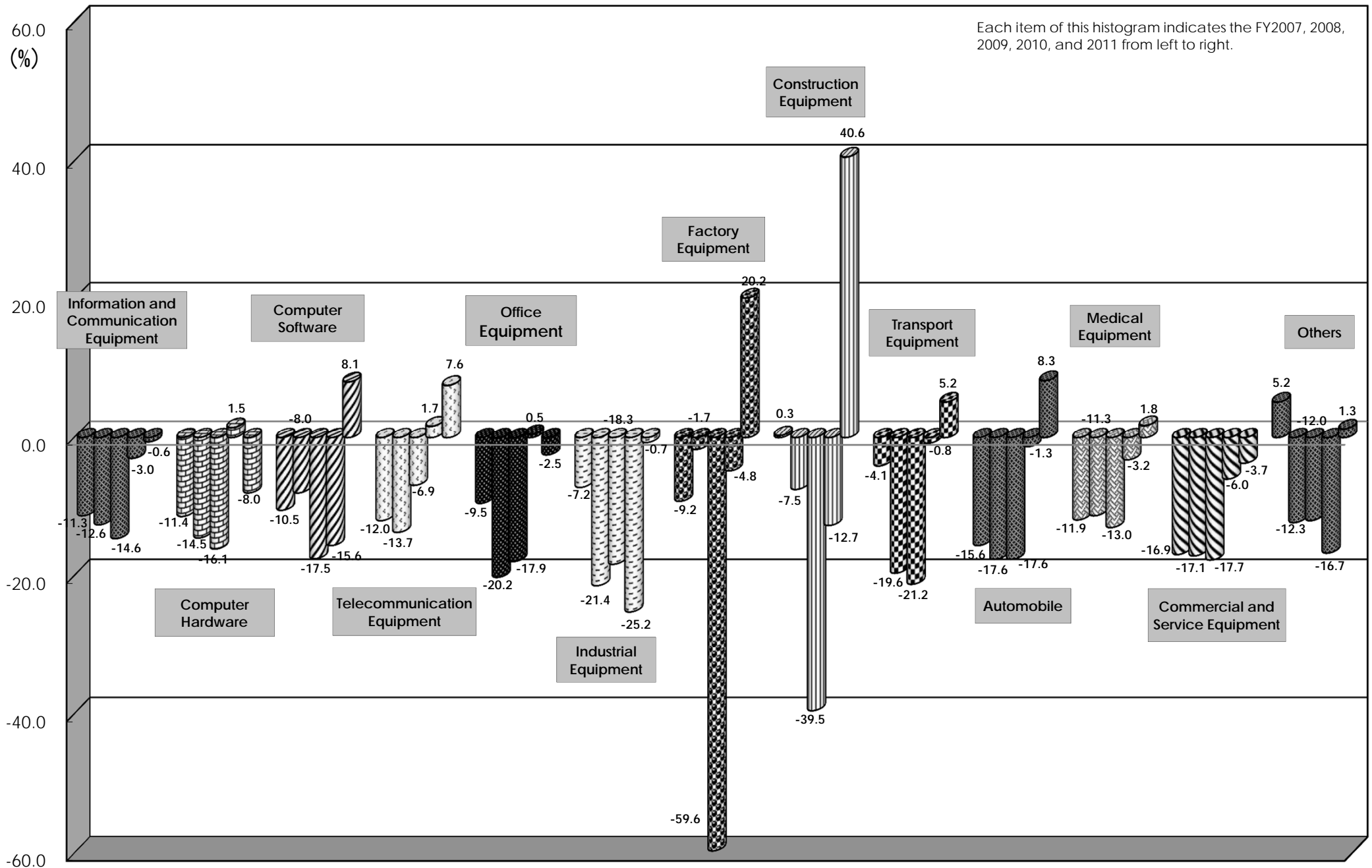
**Trends in Lease Transaction Volume, Leasing Capital Investment and Leasing Percentage to Total Private Capital Investment**



Fiscal Year	1990	1991	1992	1993	1994	1995	1996	1997	1998	1999	2000	2001	2002	2003	2004	2005	2006	2007	2008	2009	2010	2011
Lease Transaction Volume (100million yen)	84,152	88,016	77,742	71,825	73,497	76,214	82,867	79,304	71,445	74,024	79,457	77,337	73,743	73,778	76,252	79,413	78,677	71,542	60,564	49,219	45,553	45,997
Yearly Change (%)	119.1	104.6	88.3	92.4	102.3	103.7	108.7	95.7	90.1	103.6	107.3	97.3	95.4	100.0	103.4	104.1	99.1	90.9	84.7	81.3	92.6	101.0
Leasing Capital investment (100 million yen)	65,420	68,843	62,813	59,780	61,631	65,804	72,238	70,180	63,150	65,862	69,922	69,148	66,052	65,917	68,086	71,017	71,213	63,420	54,444	44,058	41,161	41,682
Yearly Change (%)	113.7	105.2	91.2	95.2	103.1	106.8	109.8	97.2	90.0	104.3	106.2	98.9	95.5	99.8	103.3	104.3	100.3	89.1	85.8	80.9	93.4	101.3
Leasing Percentage to Total Private Capital Investment(%)	7.10	7.41	7.19	7.95	8.63	9.11	9.70	8.98	8.90	9.43	9.70	10.22	10.25	10.01	10.04	10.05	9.54	8.25	7.67	7.25	6.64	6.77
Corporation Reserched	316	324	327	327	335	336	338	344	329	314	304	283	272	262	258	259	258	248	241	233	233	230

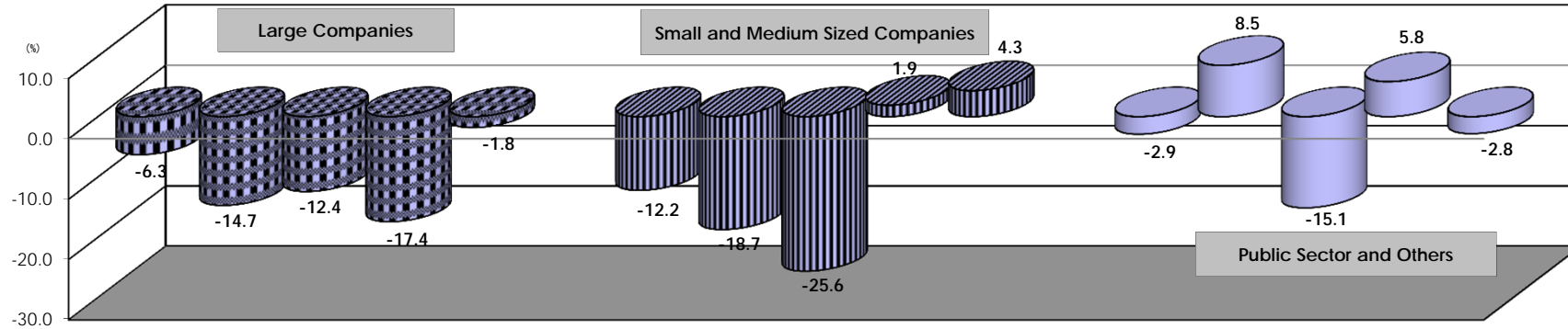
※Total Private Capital Investment, based upon nominal value, is researched by Cabinet Office. The statistic in FY 2011 is preliminary.

# Lease Transaction Volume by Type of Equipment - Yearly Change (%)



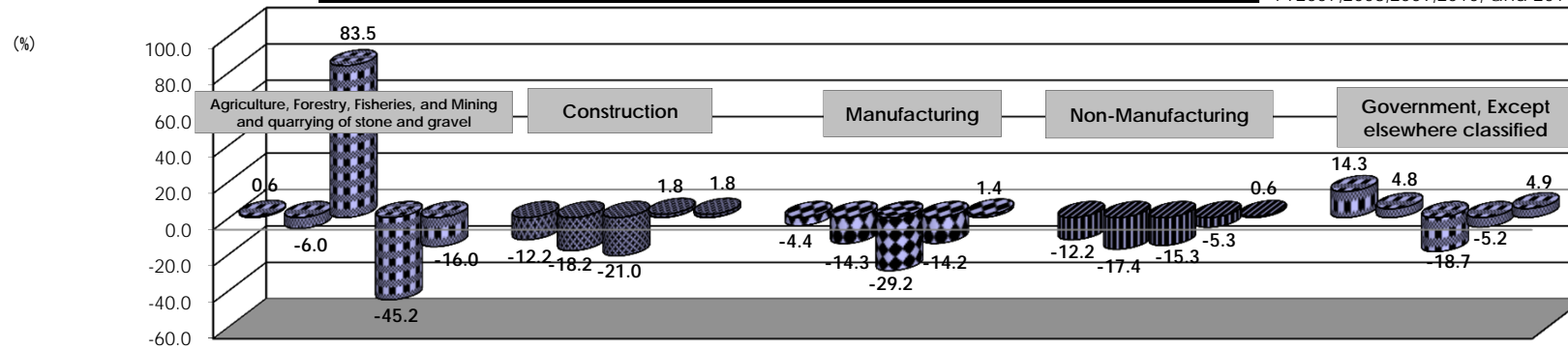
**Lease Transaction Volume by Size of Lessee - Yearly Change (%)**

Each item of this histogram indicates the FY 2007, 2008, 2009, 2010, and 2011 from left to right.



**Lease Transaction Volume by Type of Business of Lessee - Yearly Change (%)**

Each item of this histogram indicates the FY2007,2008,2009,2010, and 2011 from left to right.



Manufacturing		Yearly Change(%)
(1) Manufacture of Food		0.8
(2) Textile mill, Lumber and wood, and Pulp Products		-12.6
(3) Chemical and allied, Petroleum and coal, Plastic Products		-6.8
(4) Iron and Steel, Non-ferrous Metal, and Fabricated Metal Products		-1.1
(5) Production, Electrical, Information and Communication, Transportation Machinery		1.1
(6) Others		-4.6

Non-Manufacturing		Yearly Change(%)
(1) Electricity, Gas, Heat supply and Water		-30.5
(2) Information and Communications		19.6
(3) Transport and Postal activities		-1.6
(4) Wholesale and Retail trade		6.5
(5) Finance and Insurance		-26.4
(6) Real estate, Goods rental, and Leasing		-9.1
(7) Accommodations, Eating and drinking services		4.7
(8) Medical, Health care and Welfare		7.9
(9) Services, N.E.C.		-2.9

Due to that the classification of type of business is changed in FY 2008, the detail of yearly change in FY 2008 is not adjusted.

## Trends in Lease Transaction Volume, Leasing Capital Investment and Leasing Percentage to Total Private Capital Investment

(Unit: 100 million yen, %)

Fiscal Year	Lease Transaction Volume		Leasing Capital Investment		Total Private Capital Investment		Leasing Percentage (B)/(C)
	(A)	Yearly Change	(B)	Yearly Change	(C)	Yearly Change	
1963	7	—	—	—	46,702	—	—
1964	40	571.4	—	—	54,670	117.1	—
1965	67	167.5	—	—	50,883	93.1	—
1966	109	162.7	—	—	65,160	128.1	—
1967	290	266.1	—	—	84,691	130.0	—
1968	450	155.2	—	—	103,499	122.2	—
1969	1,200	266.7	—	—	135,607	131.0	—
1970	2,106	175.5	—	—	156,685	115.5	—
1971	2,793	132.6	—	—	152,967	97.6	—
1972	3,721	133.2	—	—	168,937	110.4	—
1973	5,279	141.9	—	—	224,299	132.8	—
1974	5,290	100.2	—	—	245,518	109.5	—
1975	5,621	106.3	—	—	243,739	99.3	—
1976	8,127	144.6	—	—	256,077	105.1	—
1977	8,604	105.9	—	—	264,534	103.3	—
1978	10,566	122.8	7,820	—	293,354	110.9	2.67
1979	14,611	138.3	10,330	132.2	340,188	116.0	3.04
1980	15,744	107.8	11,550	111.8	396,807	—	2.91
1981	19,327	122.8	14,342	124.2	413,464	104.2	3.47
1982	23,966	124.0	18,872	131.6	420,013	101.6	4.49
1983	29,927	124.9	23,262	123.3	423,263	100.8	5.50
1984	36,758	122.8	28,843	124.0	477,141	112.7	6.04
1985	43,225	117.6	33,520	116.2	545,560	114.3	6.14
1986	47,575	110.1	37,636	112.3	563,462	103.3	6.68
1987	52,967	111.3	42,089	111.8	600,936	106.7	7.00
1988	67,170	126.8	52,226	124.1	718,103	119.5	7.27
1989	70,649	105.2	57,540	110.2	807,038	112.4	7.13
1990	84,152	119.1	65,420	113.7	920,967	114.1	7.10
1991	88,016	104.6	68,843	105.2	929,323	100.9	7.41
1992	77,742	88.3	62,813	91.2	873,450	94.0	7.19
1993	71,825	92.4	59,780	95.2	751,634	86.1	7.95
1994	73,497	102.3	61,631	103.1	713,874	—	8.63
1995	76,214	103.7	65,804	106.8	722,218	101.2	9.11
1996	82,867	108.7	72,238	109.8	745,079	103.2	9.70
1997	79,304	95.7	70,180	97.2	781,900	104.9	8.98
1998	71,445	90.1	63,150	90.0	709,486	90.7	8.90
1999	74,024	103.6	65,862	104.3	698,279	98.4	9.43
2000	79,457	107.3	69,922	106.2	720,764	103.2	9.70
2001	77,337	97.3	69,148	98.9	676,867	93.9	10.22
2002	73,743	95.4	66,052	95.5	644,187	95.2	10.25
2003	73,778	100.0	65,917	99.8	658,481	102.2	10.01
2004	76,252	103.4	68,086	103.3	678,469	103.0	10.04
2005	79,413	104.1	71,017	104.3	706,357	104.1	10.05
2006	78,677	99.1	71,213	100.3	746,507	105.7	9.54
2007	71,542	90.9	63,420	89.1	768,317	102.9	8.25
2008	60,564	84.7	54,444	85.8	710,147	92.4	7.67
2009	49,219	81.3	44,058	80.9	607,711	85.6	7.25
2010	45,553	92.6	41,161	93.4	620,305	102.1	6.64
2011	45,997	101.0	41,682	101.3	616,120	99.3	6.77

The statistic in FY 2011 is preliminary (released on May 17).

## Trends in Lease Transaction Volume by Type of Equipment

(Unit: in 100 million yen)

	FY 2008		FY 2009		FY 2010		FY 2011		Yearly Change				
	Leasing Volume	Component Ratio(%)	Leasing Volume	Component Ratio (%)	Leasing Volume	Component Ratio (%)	Leasing Volume	Component Ratio (%)	08/07	09/08	10/09	11/10	
1	Information and Communication Equipment	19,877	32.8	16,968	34.5	16,460	36.1	16,364	35.6	87.4	85.4	97.0	99.4
	Computer Hardware	10,306	17.0	8,644	17.6	8,778	19.3	8,079	17.6	85.5	83.9	101.5	92.0
	Computer Software	5,496	9.1	4,532	9.2	3,827	8.4	4,135	9.0	92.0	82.5	84.4	108.1
	Telecommunication Equipment	4,075	6.7	3,792	7.7	3,855	8.5	4,149	9.0	86.3	93.1	101.7	107.6
2	Office Equipment	5,254	8.7	4,312	8.8	4,335	9.5	4,225	9.2	79.8	82.1	100.5	97.5
3	Industrial Equipment	7,935	13.1	6,485	13.2	4,849	10.6	4,815	10.5	78.6	81.7	74.8	99.3
4	Factory Equipment	2,488	4.1	1,006	2.0	957	2.1	1,150	2.5	98.3	40.4	95.2	120.2
5	Construction Equipment	1,714	2.8	1,036	2.1	905	2.0	1,272	2.8	92.5	60.5	87.3	140.6
6	Transport Equipment	6,306	10.4	4,970	10.1	4,930	10.8	5,189	11.3	80.4	78.8	99.2	105.2
	Automobile	4,960	8.2	4,088	8.3	4,037	8.9	4,373	9.5	82.4	82.4	98.7	108.3
	Vessel	93	0.2	49	0.1	40	0.1	31	0.1	405.7	52.7	81.3	77.9
7	Medical Equipment	3,037	5.0	2,641	5.4	2,557	5.6	2,604	5.7	88.7	87.0	96.8	101.8
8	Commercial and Service Equipment	8,300	13.7	6,829	13.9	6,417	14.1	6,181	13.4	82.9	82.3	94.0	96.3
	Commercial Equipment	4,599	7.6	3,993	8.1	3,821	8.4	3,857	8.4	82.8	86.8	95.7	100.9
9	Others	5,653	9.3	4,973	10.1	4,143	9.1	4,197	9.1	87.7	88.0	83.3	101.3
	Physical and Chemical Equipment	771	1.3	588	1.2	612	1.3	572	1.2	69.0	76.2	104.0	93.5
Total		60,564	100.0	49,219	100.0	45,553	100.0	45,997	100.0	84.7	81.3	92.6	101.0
Corporations researched		241		233		233		230					

## Trends in Lease Transaction Volume by Size of Lessee

(Unit: in 100 million yen)

		FY 2008		FY 2009		FY 2010		FY 2011		Yearly Change			
		Leasing Volume	Component Ratio(%)	Leasing Volume	Component Ratio (%)	Leasing Volume	Component Ratio (%)	Leasing Volume	Component Ratio (%)	08/07	09/08	10/09	11/10
1	Large Companies	28,042	46.3	24,569	49.9	20,301	44.6	19,935	43.3	85.3	87.6	82.6	98.2
	Listed companies	10,077	16.6	12,436	25.3	9,870	21.7	10,269	22.3	-	123.4	79.4	104.0
2	Small and Medium Sized Companies	28,218	46.6	20,997	42.7	21,388	47.0	22,307	48.5	81.3	74.4	101.9	104.3
3	Public Sector and Others	4,305	7.1	3,653	7.4	3,864	8.5	3,756	8.2	108.5	84.9	105.8	97.2
Total		60,564	100.0	49,219	100.0	45,553	100.0	45,997	100.0	84.7	81.3	92.6	101.0

## Trends in Lease Transaction Volume by Lessee's Business Type

(Unit: in 100 million yen)

		FY 2008		FY 2009		FY 2010		FY 2011		Yearly Change			
		Leasing Volume	Component Ratio(%)	Leasing Volume	Component Ratio (%)	Leasing Volume	Component Ratio (%)	Leasing Volume	Component Ratio (%)	08/07	09/08	10/09	11/10
1	Agriculture, Forestry, Fisheries, and Mining and quarrying of stone and gravel	326	0.5	598	1.2	328	0.7	276	0.6	94.0	183.5	54.8	84.0
2	Construction	2,447	4.0	1,933	3.9	1,968	4.3	2,003	4.4	81.8	79.0	101.8	101.8
3	Manufacturing	15,171	25.0	10,746	21.8	9,218	20.2	9,345	20.3	85.7	70.8	85.8	101.4
	Manufacture of Food	1,895	3.1	1,455	3.0	1,413	3.1	1,425	3.1	84.4	76.8	97.1	100.8
	Textile mill, Lumber and wood, and Pulp Products	1,582	2.6	1,527	3.1	927	2.0	810	1.8	96.2	96.5	60.7	87.4
	Chemical and allied, Petroleum and coal, Plastic Products	1,699	2.8	1,081	2.2	1,008	2.2	940	2.0	100.4	63.6	93.3	93.2
	Iron and Steel, Non-ferrous Metal, and Fabricated Metal Products	1,815	3.0	1,259	2.6	1,134	2.5	1,122	2.4	96.5	69.4	90.1	98.9
	Production, Electrical, Information and Communication, Transportation Machinery	6,206	10.2	4,046	8.2	3,396	7.5	3,771	8.2	79.8	65.2	83.9	111.0
	Others	1,974	3.3	1,379	2.8	1,340	2.9	1,279	2.8	80.5	69.9	97.2	95.4
4	Non-manufacturing	38,277	63.2	32,412	65.9	30,692	67.4	30,864	67.1	82.6	84.7	94.7	100.6
	Electricity, Gas, Heat supply and Water	626	1.0	497	1.0	447	1.0	310	0.7	84.4	79.4	89.8	69.5
	Information and Communications	2,208	3.6	2,230	4.5	2,361	5.2	2,823	6.1	75.3	101.0	105.9	119.6
	Transport and Postal activities	3,358	5.5	3,242	6.6	2,789	6.1	2,743	6.0	100.3	96.5	86.0	98.4
	Wholesale and Retail trade	10,561	17.4	8,378	17.0	7,906	17.4	8,420	18.3	80.8	79.3	94.4	106.5
	Finance and Insurance	1,946	3.2	1,752	3.6	1,519	3.3	1,118	2.4	82.6	90.1	86.7	73.6
	Real estate, Goods rental, and Leasing	2,739	4.5	3,417	6.9	2,811	6.2	2,554	5.6	188.1	124.8	82.3	90.9
	Accommodations, Eating and drinking services	1,308	2.2	922	1.9	985	2.2	1,031	2.2	74.3	70.5	106.8	104.7
	Medical, Health care and Welfare	3,635	6.0	2,771	5.6	3,142	6.9	3,389	7.4	88.5	76.2	113.4	107.9
	Services, N.E.C.	11,896	19.6	9,202	18.7	8,732	19.2	8,476	18.4	71.7	77.4	94.9	97.1
5	Government, Except elsewhere classified	4,343	7.2	3,531	7.2	3,347	7.3	3,509	7.6	104.8	81.3	94.8	104.9
Total		60,564	100.0	49,219	100.0	45,553	100.0	45,997	100.0	84.7	81.3	92.6	101.0

(note) Due to that the classification of type of business is changed in FY 2008, the detail of yearly change in FY 2008 is not adjusted.

## Leasing Volume by Type of Equipment (Apr. 2012)

		Leasing cases	Component Ratio (%)	Year-on-year Change (%)	Leasing Volume (in million yen)	Component Ratio (%)	Year-on-year Change (%)
1	Information and Communication Equipment	79,305	40.9	117.1	162,104.8	38.2	117.2
	Computer Hardware	( 44,880 )	( 23.2 )	( 116.7 )	( 86,520.6 )	( 20.4 )	( 121.2 )
	Computer Software	( 14,645 )	( 7.6 )	( 120.2 )	( 45,808.9 )	( 10.8 )	( 117.7 )
	Telecommunication Equipment	( 19,780 )	( 10.2 )	( 115.9 )	( 29,775.3 )	( 7.0 )	( 106.1 )
2	Office Equipment	34,887	18.0	102.5	41,889.9	9.9	104.7
3	Industrial Equipment	22,759	11.8	543.7	43,027.0	10.1	51.6
4	Factory Equipment	561	0.3	117.4	7,197.2	1.7	105.2
5	Construction Equipment	1,029	0.5	129.3	9,508.1	2.2	136.1
6	Transport Equipment	15,931	8.2	135.4	47,623.6	11.2	141.4
	Automobile	( 13,721 )	( 7.1 )	( 126.8 )	( 40,325.7 )	( 9.5 )	( 150.9 )
	Vessel	( 8 )	( 0.0 )	( 200.0 )	( 385.9 )	( 0.1 )	( 317.6 )
7	Medical Equipment	5,730	3.0	113.8	23,947.1	5.6	103.3
8	Commercial and Service Equipment	23,077	11.9	104.6	60,955.3	14.3	109.8
	Commercial Equipment	( 14,765 )	( 7.6 )	( 104.4 )	( 37,900.8 )	( 8.9 )	( 107.9 )
9	Others	10,399	5.4	53.4	28,637.9	6.7	82.7
	Physical and Chemical Equipment	( 1,298 )	( 0.7 )	( 105.2 )	( 4,447.5 )	( 1.0 )	( 98.5 )
Total		193,678	100.0	117.0	424,890.9	100.0	100.6

【Corporations researched: 233】



## Changes in Lease Transaction Volume

Unit: in 100 Million Yen, Yearly Changes: Parenthesized

	Total	Information and Communication Equipment			Office Equipment	Industry Equipment	Factory Equipment	Construction Equipment	Transport Equipment			Medical Equipment	Commercial and Service Equipment		Others			
		Computer Hardware	Computer Software	Telecommunication Equipment					Automobile	Vessel	Commercial Equipment		Physical and Chemical Equipment					
Calendar Year	2009	51,376 (▲ 19.8)	17,326 (▲ 17.7)	8,953 (▲ 19.4)	4,751 (▲ 15.3)	3,622 (▲ 16.5)	4,401 (▲ 22.6)	6,992 (▲ 18.7)	1,685 (▲ 24.3)	1,099 (▲ 38.8)	5,112 (▲ 28.1)	4,044 (▲ 26.5)	22 (▲ 48.4)	2,805 (▲ 11.3)	7,130 (▲ 16.3)	3,901 (▲ 18.9)	4,825 (▲ 17.8)	604 (▲ 29.9)
	2010	46,359 (▲ 9.8)	16,278 (▲ 6.0)	8,550 (▲ 4.5)	3,986 (▲ 16.1)	3,743 (▲ 3.3)	4,336 (▲ 1.5)	5,217 (▲ 25.4)	874 (▲ 48.1)	933 (▲ 15.1)	5,150 (▲ 0.7)	4,107 (▲ 1.5)	66 (▲ 193.8)	2,614 (▲ 6.8)	6,483 (▲ 9.1)	3,858 (▲ 1.1)	4,473 (▲ 7.3)	585 (▲ 3.1)
	2011	45,177 (▲ 2.5)	16,188 (▲ 0.6)	7,923 (▲ 7.3)	3,968 (▲ 0.4)	4,297 (▲ 14.8)	4,148 (▲ 4.3)	4,742 (▲ 9.1)	1,121 (▲ 28.3)	1,108 (▲ 18.8)	4,924 (▲ 4.4)	4,208 (▲ 2.5)	17 (▲ 73.6)	2,495 (▲ 4.5)	6,186 (▲ 4.6)	3,770 (▲ 2.3)	4,265 (▲ 4.7)	583 (▲ 0.4)
Fiscal Year (Final Figures)	2009	49,219 (▲ 18.7)	16,968 (▲ 14.6)	8,644 (▲ 16.1)	4,532 (▲ 17.5)	3,792 (▲ 6.9)	4,312 (▲ 17.9)	6,485 (▲ 18.3)	1,006 (▲ 59.6)	1,036 (▲ 39.5)	4,970 (▲ 21.2)	4,088 (▲ 17.6)	49 (▲ 47.3)	2,641 (▲ 13.0)	6,829 (▲ 17.7)	3,993 (▲ 13.2)	4,973 (▲ 12.0)	588 (▲ 23.8)
	2010	45,553 (▲ 7.4)	16,460 (▲ 3.0)	8,778 (▲ 1.5)	3,827 (▲ 15.6)	3,855 (▲ 1.7)	4,335 (▲ 0.5)	4,849 (▲ 25.2)	957 (▲ 4.8)	905 (▲ 12.7)	4,930 (▲ 0.8)	4,037 (▲ 1.3)	40 (▲ 18.7)	2,557 (▲ 3.2)	6,417 (▲ 6.0)	3,821 (▲ 4.3)	4,143 (▲ 16.7)	612 (▲ 4.0)
	2011	45,997 (▲ 1.0)	16,364 (▲ 0.6)	8,079 (▲ 8.0)	4,135 (▲ 8.1)	4,149 (▲ 7.6)	4,225 (▲ 2.5)	4,815 (▲ 0.7)	1,150 (▲ 20.2)	1,272 (▲ 40.6)	5,189 (▲ 5.2)	4,373 (▲ 8.3)	31 (▲ 22.1)	2,604 (▲ 1.8)	6,181 (▲ 3.7)	3,857 (▲ 0.9)	4,197 (▲ 1.3)	572 (▲ 6.5)
Half Year	'10 4-9	22,398 (▲ 9.4)	7,477 (▲ 7.9)	4,045 (▲ 2.4)	1,789 (▲ 18.7)	1,643 (▲ 7.2)	2,267 (▲ 3.1)	2,616 (▲ 21.6)	433 (▲ 23.6)	406 (▲ 18.1)	2,586 (▲ 7.8)	2,087 (▲ 5.6)	37 (▲ 93.0)	1,390 (▲ 3.6)	3,264 (▲ 9.3)	1,956 (▲ 1.7)	1,959 (▲ 23.4)	271 (▲ 6.9)
	10-3	23,064 (▲ 5.7)	8,614 (▲ 2.3)	4,425 (▲ 2.4)	2,030 (▲ 11.1)	2,160 (▲ 8.0)	2,079 (▲ 0.5)	2,255 (▲ 24.3)	519 (▲ 12.0)	513 (▲ 7.7)	2,481 (▲ 4.5)	2,049 (▲ 3.5)	4 (▲ 87.2)	1,217 (▲ 1.6)	3,161 (▲ 2.3)	1,864 (▲ 1.0)	2,225 (▲ 10.5)	334 (▲ 12.7)
	'11 4-9	21,463 (▲ 4.2)	7,292 (▲ 2.5)	3,597 (▲ 11.1)	1,882 (▲ 5.2)	1,813 (▲ 10.4)	2,094 (▲ 7.7)	2,431 (▲ 7.1)	509 (▲ 17.6)	498 (▲ 22.7)	2,354 (▲ 9.0)	1,977 (▲ 5.3)	9 (▲ 75.8)	1,282 (▲ 7.8)	3,125 (▲ 4.3)	1,977 (▲ 1.1)	1,878 (▲ 4.1)	268 (▲ 1.2)
10-3	24,423 (▲ 5.9)	8,841 (▲ 2.6)	4,330 (▲ 2.1)	2,244 (▲ 10.6)	2,267 (▲ 5.0)	2,139 (▲ 2.9)	2,333 (▲ 3.5)	645 (▲ 24.4)	778 (▲ 51.8)	2,890 (▲ 16.5)	2,490 (▲ 21.5)	22 (▲ 463.1)	1,325 (▲ 8.9)	3,058 (▲ 3.3)	1,825 (▲ 2.1)	2,413 (▲ 8.4)	311 (▲ 7.0)	
Quarter Year	'10 4-6	11,044 (▲ 12.2)	3,607 (▲ 9.6)	1,884 (▲ 6.1)	925 (▲ 19.4)	798 (▲ 4.4)	1,130 (▲ 1.7)	1,436 (▲ 9.8)	195 (▲ 44.2)	188 (▲ 35.0)	1,249 (▲ 2.8)	1,011 (▲ 4.4)	4 (▲ 19.5)	704 (▲ 10.9)	1,583 (▲ 18.0)	959 (▲ 7.5)	951 (▲ 25.3)	119 (▲ 16.7)
	7-9	11,355 (▲ 6.4)	3,870 (▲ 6.2)	2,162 (▲ 1.1)	863 (▲ 17.9)	845 (▲ 9.7)	1,137 (▲ 8.5)	1,180 (▲ 32.4)	238 (▲ 9.7)	217 (▲ 5.6)	1,338 (▲ 13.0)	1,076 (▲ 6.7)	33 (▲ 133.9)	686 (▲ 5.2)	1,681 (▲ 0.8)	997 (▲ 4.6)	1,008 (▲ 21.7)	152 (▲ 2.6)
	10-12	10,875 (▲ 4.4)	3,788 (▲ 0.4)	1,963 (▲ 1.5)	914 (▲ 8.7)	911 (▲ 12.5)	1,011 (▲ 2.0)	1,113 (▲ 25.4)	208 (▲ 9.5)	289 (▲ 9.0)	1,199 (▲ 2.8)	955 (▲ 9.8)	1 (▲ 49.5)	609 (▲ 1.9)	1,621 (▲ 1.1)	980 (▲ 1.8)	1,036 (▲ 2.8)	160 (▲ 12.1)
1-3	12,189 (▲ 6.8)	4,826 (▲ 3.7)	2,461 (▲ 3.1)	1,116 (▲ 13.0)	1,249 (▲ 5.0)	1,068 (▲ 1.0)	1,142 (▲ 23.2)	311 (▲ 33.2)	223 (▲ 6.0)	1,282 (▲ 6.1)	1,094 (▲ 2.8)	3 (▲ 90.6)	808 (▲ 1.2)	1,540 (▲ 3.6)	885 (▲ 4.0)	1,189 (▲ 19.5)	174 (▲ 13.3)	
'11 4-6	10,631 (▲ 3.7)	3,559 (▲ 1.3)	1,739 (▲ 7.7)	982 (▲ 6.1)	838 (▲ 5.0)	1,068 (▲ 5.7)	1,455 (▲ 1.3)	253 (▲ 30.1)	208 (▲ 10.7)	969 (▲ 22.4)	800 (▲ 20.9)	4 (▲ 7.9)	833 (▲ 10.1)	1,525 (▲ 3.7)	991 (▲ 3.3)	963 (▲ 1.2)	127 (▲ 8.6)	
7-9	10,831 (▲ 4.6)	3,733 (▲ 3.5)	1,857 (▲ 14.1)	900 (▲ 4.2)	975 (▲ 15.5)	1,028 (▲ 9.6)	976 (▲ 17.3)	255 (▲ 7.4)	289 (▲ 33.2)	1,385 (▲ 3.5)	1,177 (▲ 9.4)	5 (▲ 84.2)	649 (▲ 5.3)	1,600 (▲ 4.8)	987 (▲ 1.0)	915 (▲ 9.2)	141 (▲ 7.2)	
10-12	11,525 (▲ 6.0)	4,070 (▲ 7.4)	1,865 (▲ 5.0)	970 (▲ 6.2)	1,235 (▲ 35.5)	987 (▲ 2.5)	1,168 (▲ 4.9)	301 (▲ 45.1)	387 (▲ 33.6)	1,288 (▲ 7.4)	1,137 (▲ 19.0)	6 (▲ 363.5)	606 (▲ 0.5)	1,521 (▲ 6.2)	907 (▲ 7.4)	1,198 (▲ 15.6)	141 (▲ 12.3)	
1-3	12,898 (▲ 5.8)	4,771 (▲ 1.1)	2,465 (▲ 0.1)	1,274 (▲ 14.2)	1,032 (▲ 17.4)	1,152 (▲ 7.9)	1,165 (▲ 2.0)	344 (▲ 10.6)	392 (▲ 75.3)	1,602 (▲ 25.0)	1,353 (▲ 23.7)	16 (▲ 511.5)	719 (▲ 18.3)	1,538 (▲ 0.1)	918 (▲ 3.8)	1,215 (▲ 2.2)	170 (▲ 2.2)	
Monthly	'11 4	4,225 (▲ 1.0)	1,383 (▲ 7.7)	714 (▲ 11.4)	389 (▲ 8.0)	281 (▲ 4.0)	400 (▲ 5.1)	833 (▲ 60.5)	68 (▲ 16.7)	70 (▲ 1.9)	337 (▲ 15.0)	267 (▲ 22.2)	1 (▲ 59.3)	232 (▲ 12.5)	555 (▲ 3.8)	351 (▲ 5.5)	346 (▲ 8.2)	45 (▲ 2.0)
	5	2,933 (▲ 13.9)	1,006 (▲ 0.3)	520 (▲ 1.2)	257 (▲ 6.5)	229 (▲ 2.7)	300 (▲ 2.0)	294 (▲ 48.2)	76 (▲ 14.0)	60 (▲ 27.2)	239 (▲ 39.2)	205 (▲ 31.4)	1 (▲ 43.3)	198 (▲ 5.4)	476 (▲ 4.0)	315 (▲ 2.6)	283 (▲ 11.0)	39 (▲ 16.3)
	6	3,473 (▲ 0.6)	1,170 (▲ 5.8)	505 (▲ 8.4)	336 (▲ 28.7)	329 (▲ 12.1)	366 (▲ 9.1)	328 (▲ 6.4)	109 (▲ 56.5)	78 (▲ 12.3)	392 (▲ 14.5)	327 (▲ 11.1)	2 (▲ 165.1)	203 (▲ 11.7)	494 (▲ 3.3)	324 (▲ 1.7)	334 (▲ 30.2)	43 (▲ 3.6)
	7	3,192 (▲ 3.6)	974 (▲ 8.4)	468 (▲ 19.9)	243 (▲ 4.7)	263 (▲ 6.7)	324 (▲ 17.7)	268 (▲ 17.2)	71 (▲ 27.2)	80 (▲ 45.0)	462 (▲ 4.1)	350 (▲ 4.4)	1 (▲ 33.4)	178 (▲ 11.5)	536 (▲ 0.3)	328 (▲ 7.8)	300 (▲ 23.9)	38 (▲ 12.8)
	8	3,224 (▲ 4.2)	1,076 (▲ 5.7)	569 (▲ 6.1)	258 (▲ 25.0)	248 (▲ 9.4)	302 (▲ 3.4)	299 (▲ 2.2)	82 (▲ 26.9)	79 (▲ 37.2)	398 (▲ 7.4)	365 (▲ 12.7)	1 (▲ 88.0)	205 (▲ 0.8)	484 (▲ 11.8)	309 (▲ 9.3)	300 (▲ 33.2)	41 (▲ 0.5)
	9	4,415 (▲ 10.8)	1,683 (▲ 6.0)	820 (▲ 21.2)	398 (▲ 6.1)	464 (▲ 43.2)	402 (▲ 6.8)	409 (▲ 27.4)	102 (▲ 12.8)	130 (▲ 24.7)	526 (▲ 0.4)	462 (▲ 10.8)	3 (▲ 87.9)	267 (▲ 4.3)	580 (▲ 3.1)	349 (▲ 0.7)	315 (▲ 41.7)	62 (▲ 7.8)
	10	3,760 (▲ 0.2)	1,356 (▲ 0.1)	696 (▲ 5.7)	395 (▲ 13.2)	266 (▲ 0.8)	340 (▲ 2.3)	420 (▲ 1.7)	83 (▲ 23.7)	113 (▲ 31.8)	405 (▲ 2.8)	362 (▲ 17.8)	3 (▲ 3707.8)	210 (▲ 2.2)	471 (▲ 2.4)	280 (▲ 10.2)	363 (▲ 13.3)	47 (▲ 15.9)
	11	3,807 (▲ 22.5)	1,504 (▲ 33.7)	551 (▲ 0.0)	266 (▲ 2.9)	687 (▲ 117.8)	310 (▲ 0.9)	340 (▲ 12.7)	90 (▲ 69.3)	116 (▲ 31.4)	430 (▲ 16.6)	392 (▲ 26.0)	2 (▲ 231.5)	163 (▲ 1.1)	485 (▲ 3.2)	305 (▲ 1.3)	370 (▲ 65.6)	44 (▲ 9.4)
	12	3,958 (▲ 1.1)	1,209 (▲ 7.6)	619 (▲ 8.3)	309 (▲ 1.0)	282 (▲ 13.9)	337 (▲ 8.1)	409 (▲ 6.2)	129 (▲ 47.0)	158 (▲ 36.7)	453 (▲ 3.9)	383 (▲ 13.6)	0 (▲ 30.7)	233 (▲ 2.5)	565 (▲ 15.6)	323 (▲ 10.2)	465 (▲ 18.0)	49 (▲ 11.2)
	'12 1	3,308 (▲ 1.4)	1,267 (▲ 17.5)	690 (▲ 14.9)	366 (▲ 9.5)	211 (▲ 46.0)	302 (▲ 6.5)	291 (▲ 3.5)	67 (▲ 12.0)	109 (▲ 67.9)	351 (▲ 24.4)	293 (▲ 14.9)	3 (▲ 0.0)	222 (▲ 29.3)	470 (▲ 16.9)	298 (▲ 31.5)	230 (▲ 11.0)	52 (▲ 43.6)
	2	3,543 (▲ 11.0)	1,183 (▲ 6.9)	619 (▲ 2.5)	260 (▲ 5.7)	305 (▲ 27.7)	393 (▲ 25.1)	328 (▲ 9.7)	90 (▲ 17.8)	111 (▲ 48.5)	443 (▲ 22.7)	387 (▲ 30.9)	9 (▲ 1231.7)	188 (▲ 30.6)	465 (▲ 20.8)	257 (▲ 6.0)	341 (▲ 27.9)	36 (▲ 9.1)
	3	6,046 (▲ 7.2)	2,320 (▲ 15.0)	1,156 (▲ 10.4)	648 (▲ 20.9)	516 (▲ 18.6)	457 (▲ 2.8)	546 (▲ 2.8)	186 (▲ 18.1)	172 (▲ 104.8)	808 (▲ 26.5)	672 (▲ 23.8)	4 (▲ 95.5)	309 (▲ 5.9)	603 (▲ 20.0)	363 (▲ 12.6)	644 (▲ 3.1)	83 (▲ 16.3)
4	4,249 (▲ 0.6)	1,621 (▲ 17.2)	865 (▲ 21.2)	458 (▲ 17.7)	298 (▲ 6.1)	419 (▲ 4.7)	430 (▲ 48.4)	72 (▲ 5.2)	95 (▲ 36.1)	476 (▲ 41.4)	403 (▲ 50.9)	4 (▲ 217.6)	239 (▲ 3.3)	610 (▲ 9.8)	379 (▲ 7.9)	286 (▲ 17.3)	44 (▲ 1.5)	