

## Lease Statistics (The First Half of FY2010)

The lease transaction volume in the first half of FY2010 (from April 2010 to September 2010) is 2,239.8 billion yen, decreased by 9.4% compared with the same period of the previous year.

With respect to the type of equipment on a half year basis, Office Equipment (3.1% up) and Transport Equipment (7.8% up) have respectively turned to positive growth.

On the other hand, Information and Communication Equipment (7.9% down) has been decreasing since the second half of FY2005. Commercial and Service Equipment (9.3% down) has been also decreasing since the first half of FY2006. The other equipments such as Industrial Equipment (21.6% down), Factory Equipment (23.6% down), Construction Equipment (18.1% down), Medical Equipment (3.6% down) have been also on the decrease.

The lease transaction volume in September 2010 is 494.7 billion yen, increased by 2.6%, compared with the same period of the previous year. This is the first time for the last 40 months. With respect to the type of equipment, Information and Communication Equipment (3.9% up), Office Equipment (7.2% up), Factory Equipment (16.7% up), Construction Equipment (27.1% up), Transport Equipment (11.4% up), and Medical Equipment (2.8% up) have respectively showed positive growth. Industrial Equipment (27.6% down), and Commercial and Service Equipment (3.8% down) have showed negative growth respectively.

### Changes in Leasing Transaction Volume (Monthly)

Year, Month	Leasing Cases	Yearly Change (%)	Leasing Volume (in million yen)	Yearly Change (%)
2009, 9	164,720	73.3	482,357.3	76.1
10	145,837	79.6	407,625.5	83.3
11	133,106	81.5	330,490.1	83.3
12	141,004	76.5	399,503.0	72.6
2010, 1	112,866	74.9	313,651.7	75.4
2	119,701	85.3	354,989.7	89.3
3	182,383	90.3	639,886.4	89.4
4	164,830	86.2	418,368.5	88.7
5	156,099	104.8	340,738.3	93.8
6	162,327	104.6	345,258.1	81.6
7	177,953	111.5	331,156.6	82.8
8	141,190	105.1	309,583.3	93.5
9	168,008	102.0	494,727.4	102.6
The First Half of FY2010	970,407	101.7	2,239,832.2	90.6

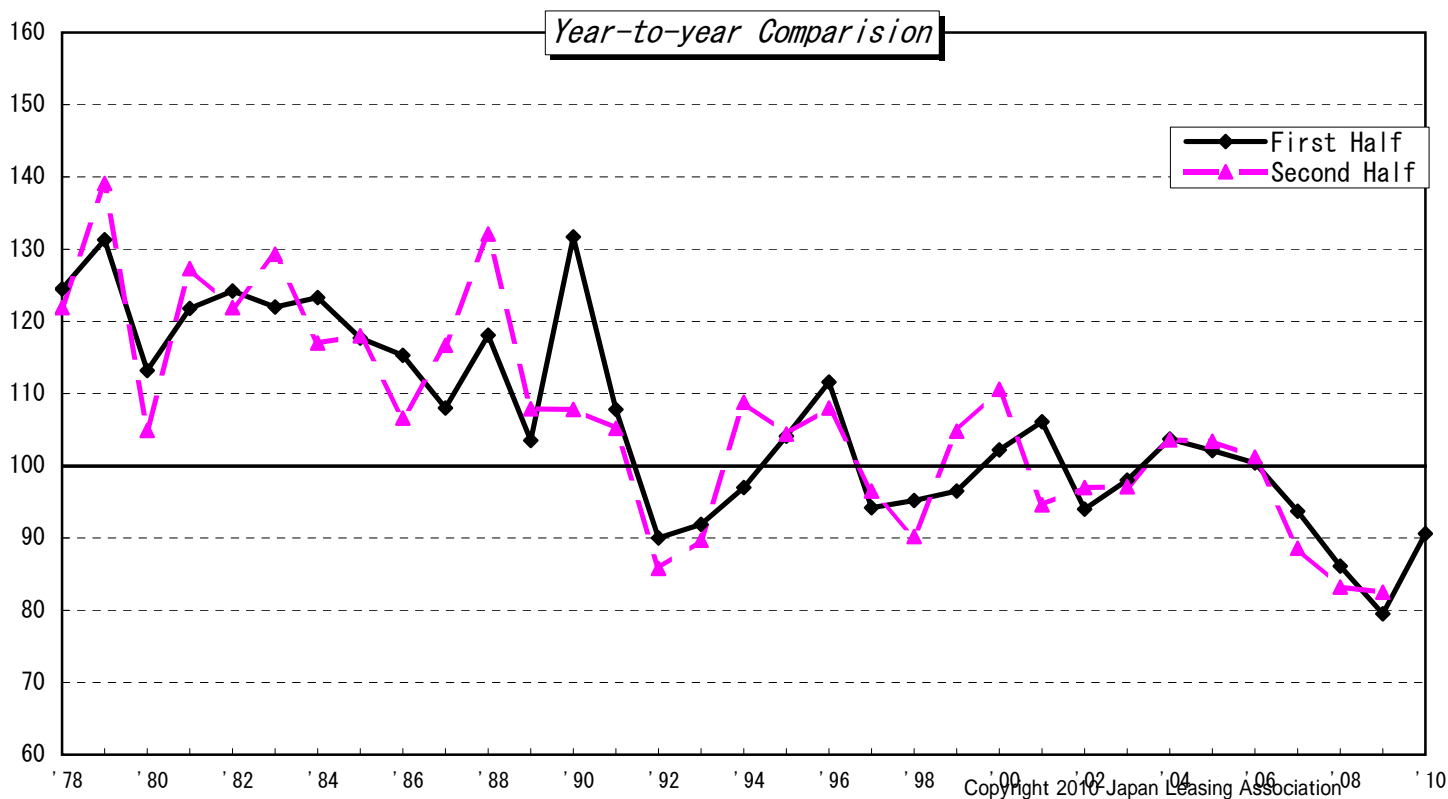
★ Corporations researched: 235(as of September 2010)

# Change in Total of Lease Transaction Volume (Separated by Half)

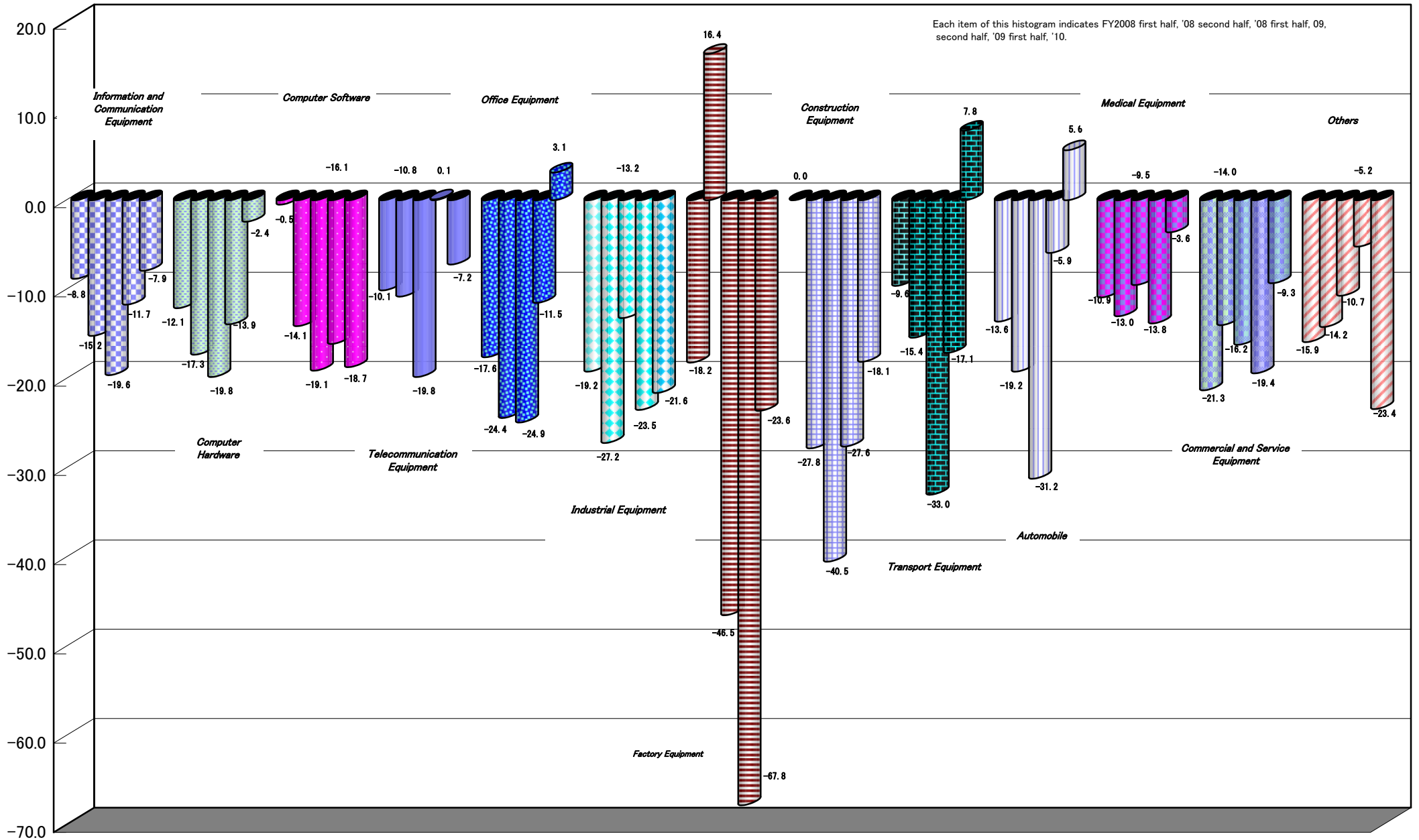
(in 100 million yen %)

Fiscal Year	First Half (April-September)			Second Half (October-March)		
	Leasing Volume	Yearly Change	Half-yearly Change	Leasing Volume	Yearly Change	Half-yearly Change
1972	1,489	—	—	2,079	—	139.6
1973	2,649	177.9	127.4	2,608	125.4	98.4
1974	2,713	102.4	104.0	2,670	102.4	98.4
1975	2,844	104.8	106.5	2,831	106.0	99.5
1976	(regular member)	3,131	110.1	3,612	127.6	115.4
	(total)	3,629	—	4,280	—	117.9
1977	4,200	115.7	98.1	4,415	103.1	105.1
1978	5,227	124.5	118.4	5,381	121.9	102.9
1979	6,863	131.3	127.5	7,484	139.1	109.0
1980	7,766	113.2	103.8	7,850	104.9	101.1
1981	9,458	121.8	120.5	9,996	127.3	105.7
1982	11,751	124.2	117.6	12,181	121.9	103.7
1983	14,333	122.0	117.7	15,755	129.3	109.9
1984	17,666	123.3	112.1	18,428	117.0	104.3
1985	20,800	117.7	112.9	21,736	118.0	104.5
1986	23,992	115.3	110.4	23,172	106.6	96.6
1987	25,901	108.0	111.8	27,033	116.7	104.4
1988	30,595	118.1	113.2	35,723	132.1	116.8
1989	31,659	103.5	88.6	38,553	107.9	121.8
1990	41,700	131.7	108.2	41,579	107.8	99.7
1991	44,960	107.8	108.1	43,745	105.2	97.3
1992	40,474	90.0	92.5	37,532	85.8	92.7
1993	37,185	91.9	99.1	33,684	89.7	90.6
1994	36,082	97.0	107.1	36,643	108.8	101.6
1995	37,554	104.1	102.5	38,249	104.4	101.9
1996	41,907	111.6	109.6	41,290	108.0	98.5
1997	39,474	94.2	95.6	39,860	96.5	101.0
1998	37,595	95.2	94.3	35,944	90.2	95.6
1999	36,298	96.5	101.0	37,661	104.8	103.8
2000	37,081	102.2	98.5	41,644	110.6	112.3
2001	39,356	106.1	94.5	39,405	94.6	100.1
2002	36,996	94.0	93.9	38,224	97.0	103.3
2003	36,252	98.0	94.8	37,112	97.1	102.4
2004	37,576	103.7	101.3	38,432	103.6	102.3
2005	38,380	102.1	99.9	39,752	103.4	103.6
2006	38,541	100.4	97.0	40,215	101.2	104.3
2007	36,119	93.7	89.8	35,627	88.6	98.6
2008	31,091	86.1	87.3	29,654	83.2	95.4
2009	24,712	79.5	83.3	24,461	82.5	99.0
2010	22,398	90.6	91.6			

Note: Leasing volume before FY 1976 does not include that of associated members.



# Lease Transaction Volume by Type of Equipment - Year-to-year Comparison (Half Year Basis)



## Leasing Volume by Type of Equipment (Sep. 2010)

		Leasing cases	Component Ratio (%)	Year-on-year Change (%)	Leasing Volume (in million yen)	Component Ratio (%)	Year-on-year Change (%)
1	Information and Communication Equipment	76,626	45.6	111.0	178,937.1	36.2	103.9
	Computer Hardware	( 39,715 )	( 23.6 )	( 114.6 )	( 104,117.9 )	( 21.0 )	( 126.4 )
	Computer Software	( 14,855 )	( 8.8 )	( 114.3 )	( 42,404.4 )	( 8.6 )	( 84.3 )
	Telecommunication Equipment	( 22,056 )	( 13.1 )	( 103.1 )	( 32,414.8 )	( 6.6 )	( 82.0 )
2	Office Equipment	30,696	18.3	101.5	43,159.5	8.7	107.2
3	Industrial Equipment	4,908	2.9	108.0	56,305.0	11.4	72.4
4	Factory Equipment	540	0.3	139.2	11,732.6	2.4	116.7
5	Construction Equipment	1,055	0.6	77.7	10,462.9	2.1	127.1
6	Transport Equipment	16,964	10.1	100.5	52,379.6	10.6	111.4
	Automobile	( 15,309 )	( 9.1 )	( 100.4 )	( 41,691.1 )	( 8.4 )	( 103.3 )
	Vessel	( 6 )	( 0.0 )	( 100.0 )	( 2,634.2 )	( 0.5 )	( 2,197.0 )
7	Medical Equipment	5,156	3.1	96.8	27,875.4	5.6	102.8
8	Commercial and Service Equipment	22,418	13.3	90.2	59,854.8	12.1	96.2
	Commercial Equipment	( 17,575 )	( 10.5 )	( 130.6 )	( 35,128.6 )	( 7.1 )	( 106.8 )
9	Others	9,645	5.7	79.8	54,020.5	10.9	144.1
	Physical and Chemical Equipment	( 1,446 )	( 0.9 )	( 96.0 )	( 6,674.8 )	( 1.3 )	( 130.4 )
Total		168,008	100.0	102.0	494,727.4	100.0	102.6

【Corporations researched: 235】

# Leasing Volume by Type of Equipment

(Apr. 2010 - Sep. 2010)

		Leasing cases	Component Ratio (%)	Yearly Change (%)	Leasing Volume (in million yen)	Component Ratio (%)	Yearly Change (%)
1	Information and Communication Equipment	421,109	43.4	104.9	747,680.2	33.4	92.1
	Computer Hardware	( 219,115 )	( 22.6 )	( 102.2 )	( 404,536.3 )	( 18.1 )	( 97.6 )
	Computer Software	( 83,342 )	( 8.6 )	( 121.7 )	( 178,859.4 )	( 8.0 )	( 81.3 )
	Telecommunication Equipment	( 118,652 )	( 12.2 )	( 100.0 )	( 164,284.5 )	( 7.3 )	( 92.8 )
2	Office Equipment	182,166	18.8	103.5	226,714.8	10.1	103.1
3	Industrial Equipment	40,555	4.2	171.0	261,621.2	11.7	78.4
4	Factory Equipment	2,718	0.3	130.4	43,265.8	1.9	76.4
5	Construction Equipment	4,783	0.5	52.6	40,573.6	1.8	81.9
6	Transport Equipment	88,183	9.1	98.8	258,641.1	11.5	107.8
	Automobile	( 78,745 )	( 8.1 )	( 98.4 )	( 208,695.9 )	( 9.3 )	( 105.6 )
	Vessel	( 39 )	( 0.0 )	( 92.9 )	( 3,711.7 )	( 0.2 )	( 193.0 )
7	Medical Equipment	27,722	2.9	87.8	138,969.6	6.2	96.4
8	Commercial and Service Equipment	137,750	14.2	95.8	326,441.3	14.6	90.7
	Commercial Equipment	( 105,382 )	( 10.9 )	( 123.9 )	( 195,647.1 )	( 8.7 )	( 98.3 )
9	Others	65,421	6.7	85.1	195,924.6	8.7	76.6
	Physical and Chemical Equipment	( 8,916 )	( 0.9 )	( 62.9 )	( 27,145.9 )	( 1.2 )	( 93.1 )
Total		970,407	100.0	101.7	2,239,832.2	100.0	90.6

## Changes in Lease Transaction Volume

Unit: in 100 Million Yen, Yearly Changes: Parenthesized

	Total	Information and Communication Equipment				Office Equipment	Industrial Equipment	Factory Equipment	Construction Equipment	Transport Equipment			Medical Equipment	Commercial and Service Equipment		Others		
		Computer Hardware	Computer Software	Telecommunication Equipment	Automobile					Vessel	Commercial Equipment	Physical and Chemical Equipment						
Calendar Year	2007	74,234 (▲ 4.9)	23,686 (▲ 8.2)	12,560 (▲ 14.0)	6,082 (▲ 1.0)	5,044 (▲ 2.6)	6,830 (▲ 2.2)	10,398 (▲ 1.8)	2,640 (▲ 6.0)	1,892 (▲ 3.1)	7,837 (▲ 4.2)	6,547 (▲ 7.9)	19 (▲ 29.7)	3,477 (▲ 12.9)	10,861 (▲ 10.0)	5,874 (▲ 8.6)	6,613 (▲ 8.3)	865 (▲ 5.1)
	2008	64,027 (▲ 13.8)	21,058 (▲ 11.1)	11,113 (▲ 11.5)	5,610 (▲ 7.8)	4,336 (▲ 14.0)	5,682 (▲ 16.8)	8,602 (▲ 17.3)	2,227 (▲ 15.6)	1,795 (▲ 5.2)	7,111 (▲ 9.3)	5,502 (▲ 16.0)	15 (▲ 21.2)	3,161 (▲ 9.1)	8,521 (▲ 21.5)	4,808 (▲ 18.2)	5,870 (▲ 11.2)	862 (▲ 0.4)
	2009	51,376 (▲ 19.8)	17,326 (▲ 17.7)	8,953 (▲ 19.4)	4,751 (▲ 15.3)	3,622 (▲ 16.5)	4,401 (▲ 22.6)	6,992 (▲ 18.7)	1,685 (▲ 24.3)	1,099 (▲ 38.8)	5,112 (▲ 28.1)	4,044 (▲ 26.5)	22 (▲ 48.4)	2,805 (▲ 11.3)	7,130 (▲ 16.3)	3,901 (▲ 18.9)	4,825 (▲ 17.8)	604 (▲ 29.9)
Fiscal Year (Final Figures)	2007	71,542 (▲ 9.1)	22,754 (▲ 11.3)	12,056 (▲ 11.4)	5,976 (▲ 10.5)	4,722 (▲ 12.0)	6,582 (▲ 9.5)	10,099 (▲ 7.2)	2,532 (▲ 9.2)	1,854 (▲ 0.3)	7,841 (▲ 4.1)	6,022 (▲ 15.6)	23 (▲ 8.0)	3,425 (▲ 11.9)	10,011 (▲ 16.9)	5,557 (▲ 8.5)	6,444 (▲ 5.2)	1,118 (▲ 19.7)
	2008	60,564 (▲ 15.3)	19,877 (▲ 12.6)	10,306 (▲ 14.5)	5,496 (▲ 8.0)	4,075 (▲ 13.7)	5,254 (▲ 20.2)	7,935 (▲ 21.4)	2,488 (▲ 1.7)	1,714 (▲ 7.5)	6,306 (▲ 19.6)	4,960 (▲ 17.6)	93 (▲ 305.7)	3,037 (▲ 11.3)	8,300 (▲ 17.1)	4,599 (▲ 17.2)	5,653 (▲ 12.3)	771 (▲ 31.0)
	2009	49,219 (▲ 18.7)	16,968 (▲ 14.6)	8,644 (▲ 16.1)	4,532 (▲ 17.5)	3,792 (▲ 6.9)	4,312 (▲ 17.9)	6,485 (▲ 18.3)	1,006 (▲ 59.6)	1,036 (▲ 39.5)	4,970 (▲ 21.2)	4,088 (▲ 17.6)	49 (▲ 47.3)	2,641 (▲ 13.0)	6,829 (▲ 17.7)	3,993 (▲ 13.2)	4,973 (▲ 12.0)	588 (▲ 23.8)
Half Year	'08 10-3	29,654 (▲ 16.8)	9,983 (▲ 15.2)	5,264 (▲ 17.3)	2,722 (▲ 14.1)	1,996 (▲ 10.8)	2,361 (▲ 24.4)	3,899 (▲ 27.2)	1,437 (▲ 16.4)	768 (▲ 27.8)	3,132 (▲ 15.4)	2,256 (▲ 19.2)	8 (▲ 5.5)	1,435 (▲ 13.0)	4,018 (▲ 14.0)	2,076 (▲ 20.4)	2,622 (▲ 14.2)	360 (▲ 27.8)
	'09 4-9	24,712 (▲ 20.5)	8,115 (▲ 19.6)	4,146 (▲ 19.8)	2,199 (▲ 19.1)	1,771 (▲ 19.8)	2,198 (▲ 24.9)	3,338 (▲ 13.2)	566 (▲ 46.5)	496 (▲ 40.5)	2,399 (▲ 33.0)	1,977 (▲ 31.2)	19 (▲ 465.6)	1,442 (▲ 9.5)	3,599 (▲ 16.2)	1,990 (▲ 20.6)	2,559 (▲ 10.7)	291 (▲ 28.5)
	10-3	24,461 (▲ 17.5)	8,817 (▲ 11.7)	4,534 (▲ 13.9)	2,284 (▲ 16.1)	1,999 (▲ 0.1)	2,089 (▲ 11.5)	2,981 (▲ 23.5)	463 (▲ 67.8)	555 (▲ 27.6)	2,597 (▲ 17.1)	2,123 (▲ 5.9)	30 (▲ 274.2)	1,236 (▲ 13.8)	3,237 (▲ 19.4)	1,884 (▲ 9.2)	2,485 (▲ 5.2)	297 (▲ 17.6)
	'10 4-9	22,398 (▲ 9.4)	7,477 (▲ 7.9)	4,045 (▲ 2.4)	1,789 (▲ 18.7)	1,643 (▲ 7.2)	2,267 (▲ 3.1)	2,616 (▲ 21.6)	433 (▲ 23.6)	406 (▲ 18.1)	2,586 (▲ 7.8)	2,087 (▲ 5.6)	37 (▲ 93.0)	1,390 (▲ 3.6)	3,264 (▲ 9.3)	1,956 (▲ 1.7)	1,959 (▲ 23.4)	271 (▲ 6.9)
Quarter Year	10-12	14,367 (▲ 15.8)	4,575 (▲ 15.0)	2,450 (▲ 14.6)	1,171 (▲ 19.3)	955 (▲ 10.4)	1,190 (▲ 23.5)	1,738 (▲ 25.5)	547 (▲ 10.6)	482 (▲ 17.5)	1,651 (▲ 9.4)	1,247 (▲ 11.3)	7 (▲ 128.7)	693 (▲ 10.4)	2,127 (▲ 17.5)	1,127 (▲ 21.4)	1,364 (▲ 3.6)	190 (▲ 19.1)
	1-3	15,288 (▲ 17.7)	5,408 (▲ 15.3)	2,815 (▲ 19.5)	1,552 (▲ 9.8)	1,041 (▲ 11.1)	1,171 (▲ 25.3)	2,161 (▲ 28.4)	890 (▲ 42.9)	285 (▲ 40.5)	1,481 (▲ 21.2)	1,009 (▲ 27.1)	1 (▲ 83.0)	742 (▲ 15.2)	1,892 (▲ 9.8)	949 (▲ 19.2)	1,258 (▲ 23.3)	170 (▲ 35.6)
	'09 4-6	12,578 (▲ 18.9)	3,989 (▲ 22.8)	2,007 (▲ 23.5)	1,148 (▲ 16.8)	835 (▲ 28.4)	1,150 (▲ 25.0)	1,592 (▲ 11.8)	349 (▲ 33.0)	290 (▲ 26.1)	1,215 (▲ 27.9)	969 (▲ 28.5)	5 (▲ 151.0)	790 (▲ 8.4)	1,931 (▲ 9.1)	1,037 (▲ 18.2)	1,273 (▲ 10.2)	143 (▲ 25.9)
	7-9	12,134 (▲ 22.1)	4,126 (▲ 16.3)	2,139 (▲ 16.0)	1,051 (▲ 21.6)	936 (▲ 10.2)	1,048 (▲ 24.7)	1,746 (▲ 14.4)	217 (▲ 59.6)	206 (▲ 53.3)	1,184 (▲ 37.5)	1,008 (▲ 33.5)	14 (▲ 938.7)	652 (▲ 10.8)	1,668 (▲ 23.2)	953 (▲ 23.1)	1,286 (▲ 11.1)	148 (▲ 30.8)
	10-12	11,376 (▲ 20.8)	3,803 (▲ 16.9)	1,993 (▲ 18.7)	1,001 (▲ 14.5)	810 (▲ 15.2)	1,032 (▲ 13.3)	1,493 (▲ 14.1)	230 (▲ 58.1)	318 (▲ 34.1)	1,233 (▲ 25.3)	1,059 (▲ 15.1)	2 (▲ 65.9)	621 (▲ 10.3)	1,640 (▲ 22.9)	962 (▲ 14.6)	1,007 (▲ 26.1)	143 (▲ 24.8)
	1-3	13,085 (▲ 14.4)	5,014 (▲ 7.3)	2,541 (▲ 9.7)	1,284 (▲ 17.3)	1,189 (▲ 14.2)	1,058 (▲ 9.7)	1,488 (▲ 31.1)	234 (▲ 73.7)	238 (▲ 16.8)	1,365 (▲ 7.8)	1,064 (▲ 5.5)	28 (▲ 3,553.9)	615 (▲ 17.1)	1,597 (▲ 15.6)	922 (▲ 2.9)	1,478 (▲ 17.4)	154 (▲ 9.5)
	'10 4-6	11,044 (▲ 12.2)	3,607 (▲ 9.6)	1,884 (▲ 6.1)	925 (▲ 19.4)	798 (▲ 4.4)	1,130 (▲ 1.7)	1,436 (▲ 9.8)	195 (▲ 44.2)	188 (▲ 35.0)	1,249 (▲ 2.8)	1,011 (▲ 4.4)	4 (▲ 19.5)	704 (▲ 10.9)	1,583 (▲ 18.0)	959 (▲ 7.5)	951 (▲ 25.3)	119 (▲ 16.7)
	7-9	11,355 (▲ 6.4)	3,870 (▲ 6.2)	2,162 (▲ 1.1)	863 (▲ 17.9)	845 (▲ 9.7)	1,137 (▲ 8.5)	1,180 (▲ 32.4)	238 (▲ 9.7)	217 (▲ 5.6)	1,338 (▲ 13.0)	1,076 (▲ 6.7)	33 (▲ 133.9)	686 (▲ 5.2)	1,681 (▲ 0.8)	997 (▲ 4.6)	1,008 (▲ 21.7)	152 (▲ 2.6)
Monthly	'09 9	4,824 (▲ 23.9)	1,722 (▲ 18.9)	824 (▲ 21.8)	503 (▲ 18.7)	395 (▲ 12.6)	403 (▲ 23.4)	778 (▲ 13.0)	101 (▲ 53.6)	82 (▲ 58.7)	470 (▲ 42.3)	403 (▲ 29.8)	1 (▲ 933.6)	271 (▲ 3.7)	622 (▲ 18.8)	329 (▲ 21.9)	375 (▲ 27.1)	51 (▲ 44.7)
	10	4,076 (▲ 16.7)	1,480 (▲ 15.4)	825 (▲ 12.9)	392 (▲ 13.6)	263 (▲ 24.3)	358 (▲ 19.2)	531 (▲ 2.3)	85 (▲ 54.4)	136 (▲ 19.3)	409 (▲ 28.9)	345 (▲ 23.0)	1 (▲ 48.7)	225 (▲ 9.0)	471 (▲ 20.2)	287 (▲ 22.9)	381 (▲ 8.2)	46 (▲ 31.3)
	11	3,305 (▲ 16.7)	1,131 (▲ 5.5)	578 (▲ 7.8)	290 (▲ 4.4)	263 (▲ 1.0)	305 (▲ 9.6)	343 (▲ 28.9)	53 (▲ 70.6)	78 (▲ 45.0)	429 (▲ 8.0)	368 (▲ 7.4)	0 (▲ 83.9)	186 (▲ 12.6)	500 (▲ 18.5)	292 (▲ 10.5)	280 (▲ 17.2)	52 (▲ 3.0)
	12	3,995 (▲ 27.4)	1,192 (▲ 26.9)	590 (▲ 32.6)	318 (▲ 23.0)	284 (▲ 16.9)	369 (▲ 10.0)	619 (▲ 15.9)	92 (▲ 49.5)	104 (▲ 39.6)	395 (▲ 35.2)	346 (▲ 13.9)	1 (▲ 73.1)	210 (▲ 9.7)	668 (▲ 27.6)	383 (▲ 10.6)	346 (▲ 43.3)	44 (▲ 35.5)
	'10 1	3,137 (▲ 24.6)	1,321 (▲ 11.6)	708 (▲ 8.0)	386 (▲ 15.6)	226 (▲ 15.1)	284 (▲ 16.4)	284 (▲ 40.4)	49 (▲ 61.6)	52 (▲ 39.1)	273 (▲ 25.0)	237 (▲ 19.8)	0 (▲ 202.0)	141 (▲ 34.4)	448 (▲ 26.8)	233 (▲ 28.2)	285 (▲ 36.0)	38 (▲ 17.3)
	2	3,550 (▲ 10.7)	1,365 (▲ 5.3)	625 (▲ 18.8)	261 (▲ 33.3)	479 (▲ 71.1)	293 (▲ 10.5)	425 (▲ 27.9)	42 (▲ 69.3)	72 (▲ 4.2)	337 (▲ 14.2)	305 (▲ 6.8)	1 (▲ 1,428.1)	166 (▲ 19.6)	396 (▲ 11.6)	242 (▲ 4.2)	453 (▲ 27.3)	36 (▲ 21.1)
	3	6,399 (▲ 10.6)	2,328 (▲ 5.8)	1,208 (▲ 5.2)	636 (▲ 9.5)	484 (▲ 2.3)	480 (▲ 4.5)	779 (▲ 28.8)	142 (▲ 77.2)	114 (▲ 9.0)	754 (▲ 4.2)	523 (▲ 8.0)	26 (▲ 4,131.2)	308 (▲ 3.9)	754 (▲ 9.4)	446 (▲ 20.2)	740 (▲ 61.6)	80 (▲ 1.8)
	4	4,184 (▲ 11.3)	1,498 (▲ 12.3)	806 (▲ 6.8)	423 (▲ 23.6)	270 (▲ 7.2)	421 (▲ 1.4)	519 (▲ 15.4)	59 (▲ 65.3)	71 (▲ 38.7)	396 (▲ 10.8)	343 (▲ 0.7)	3 (▲ 99.1)	265 (▲ 5.2)	577 (▲ 7.9)	333 (▲ 8.8)	377 (▲ 23.7)	44 (▲ 21.0)
	5	3,407 (▲ 6.2)	1,003 (▲ 10.3)	527 (▲ 10.5)	241 (▲ 11.7)	235 (▲ 8.4)	306 (▲ 8.4)	567 (▲ 13.7)	66 (▲ 25.7)	47 (▲ 55.3)	394 (▲ 15.7)	299 (▲ 2.8)	0 (▲ 78.7)	210 (▲ 17.3)	496 (▲ 13.3)	307 (▲ 13.5)	318 (▲ 0.8)	33 (▲ 34.4)
	6	3,453 (▲ 18.4)	1,105 (▲ 4.9)	552 (▲ 0.4)	261 (▲ 18.7)	293 (▲ 2.0)	403 (▲ 3.8)	350 (▲ 45.6)	70 (▲ 23.5)	70 (▲ 3.2)	459 (▲ 6.7)	368 (▲ 9.4)	1 (▲ 60.0)	229 (▲ 10.7)	511 (▲ 30.3)	319 (▲ 0.7)	256 (▲ 44.0)	42 (▲ 14.5)
	7	3,312 (▲ 17.2)	1,063 (▲ 22.9)	584 (▲ 25.0)	233 (▲ 26.4)	247 (▲ 13.3)	393 (▲ 10.5)	324 (▲ 34.5)	56 (▲ 11.1)	55 (▲ 8.9)	444 (▲ 10.2)	335 (▲ 2.9)	2 (▲ 82.3)	201 (▲ 4.0)	534 (▲ 0.9)	305 (▲ 8.0)	242 (▲ 52.8)	44 (▲ 24.3)
	8	3,096 (▲ 6.5)	1,017 (▲ 0.7)	537 (▲ 0.0)	207 (▲ 10.8)	274 (▲ 7.2)	312 (▲ 7.8)	293 (▲ 38.2)	65 (▲ 20.8)	57 (▲ 8.6)	370 (▲ 19.0)	324 (▲ 24.9)	4 (▲ 1,893.2)	206 (▲ 9.8)	549 (▲ 8.2)	341 (▲ 16.4)	225 (▲ 43.5)	41 (▲ 6.4)
	9	4,947 (▲ 2.6)	1,789 (▲ 3.9)	1,041 (▲ 26.4)	424 (▲ 15.7)	324 (▲ 18.0)	432 (▲ 7.2)	563 (▲ 27.6)	117 (▲ 16.7)	105 (▲ 27.1)	524 (▲ 11.4)	417 (▲ 3.3)	26 (▲ 2,097.0)	279 (▲ 2.8)	599 (▲ 3.8)	351 (▲ 6.8)	540 (▲ 44.1)	67 (▲ 30.4)