

## **Lease Statistics (FY 2009)**

### ◆ **Outline**

The total lease transaction volume in FY 2009 is 4,921.9 billion yen, decreased by 18.7%, compared with the volume in FY 2008 <corporations researched: 233>.

Leasing percentage to total private capital investment is 7.01%, and this indicates that approximate 7% of the private capital investment is occupied by leases.

With respect to type of equipment, Information and Communication Equipment, Industrial Equipment, and Commercial and Service Equipment have showed negative growth respectively. In regard to type of Lessee's size, both "Small and Medium sized Companies" and "Large Companies" have decreased in the lease transaction volume. In regard to type of Business, both "Manufacturing" and "Non-Manufacturing" have decreased in the lease transaction volume.

### ◆ **Leasing Percentage**

Leasing Percentage (ratio of leasing capital investment to the total private capital investment) in FY 2009 is 7.01%, and Leasing plays a role of approximate 7% of the total private capital investment.

### ◆ **Lease Transaction Volume by Type of Equipment**

Information and Communication Equipment (14.6% down) has showed negative growth in a row of 5 years since FY2005. Medical Equipment (13.0% down), and Commercial and Service Equipment (17.7% down) have respectively showed negative growth in a row of 4 years. Office Equipment (17.9% down), Industrial Equipment (18.3% down), Factory Equipment (59.6% down), Transport Equipment (21.2% down) have respectively showed negative growth in a row of 3 years. Construction Equipment (39.5% down) has also showed negative growth in a row of 2 years.

### ◆ **Lease Transaction Volume by Size of Lessee and Lessee's Business Type**

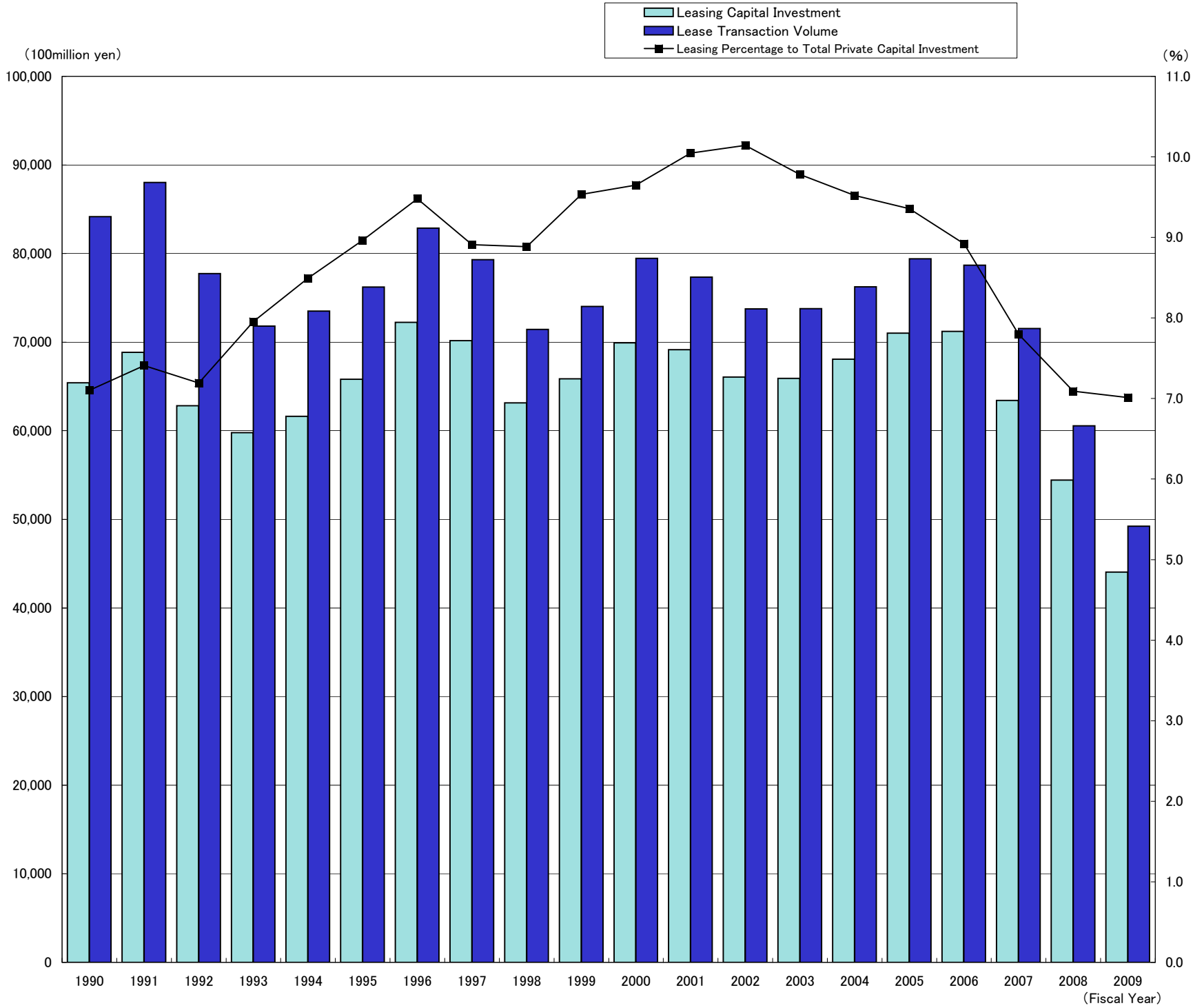
"Small and Medium Sized Companies" (companies with capital 0.1 billion yen and less or solo proprietors) has showed a double-digit decrease (25.6% down) in a row of 3 years, while "Large Companies" (companies with capital over 0.1 billion yen) has also showed negative growth (12.4% down) in a row of 4 years. The component ratio of "Large Companies" is 49.9%, and that of "Small and Medium Sized Companies" is 42.7%. It is the first time since FY 2004 that the share of "Large Companies" has exceeded that of "Small and Medium Sized Companies".

"Non-Manufacturing" (15.3% down) has showed a double-digit decrease in a row of 3 years, while "Manufacturing" (29.2% down) has also showed negative growth in a row of 4 years.

### **Lease Statistics (April 2010)**

Lease transaction volume in April 2010 is 418.4 billion yen, decreased by 11.3%. The lease transaction volume has been on the decrease in a row of 35 months. With respect to the type of equipment, almost all the equipments, except Industrial Equipment (15.4% up), have showed negative growth.

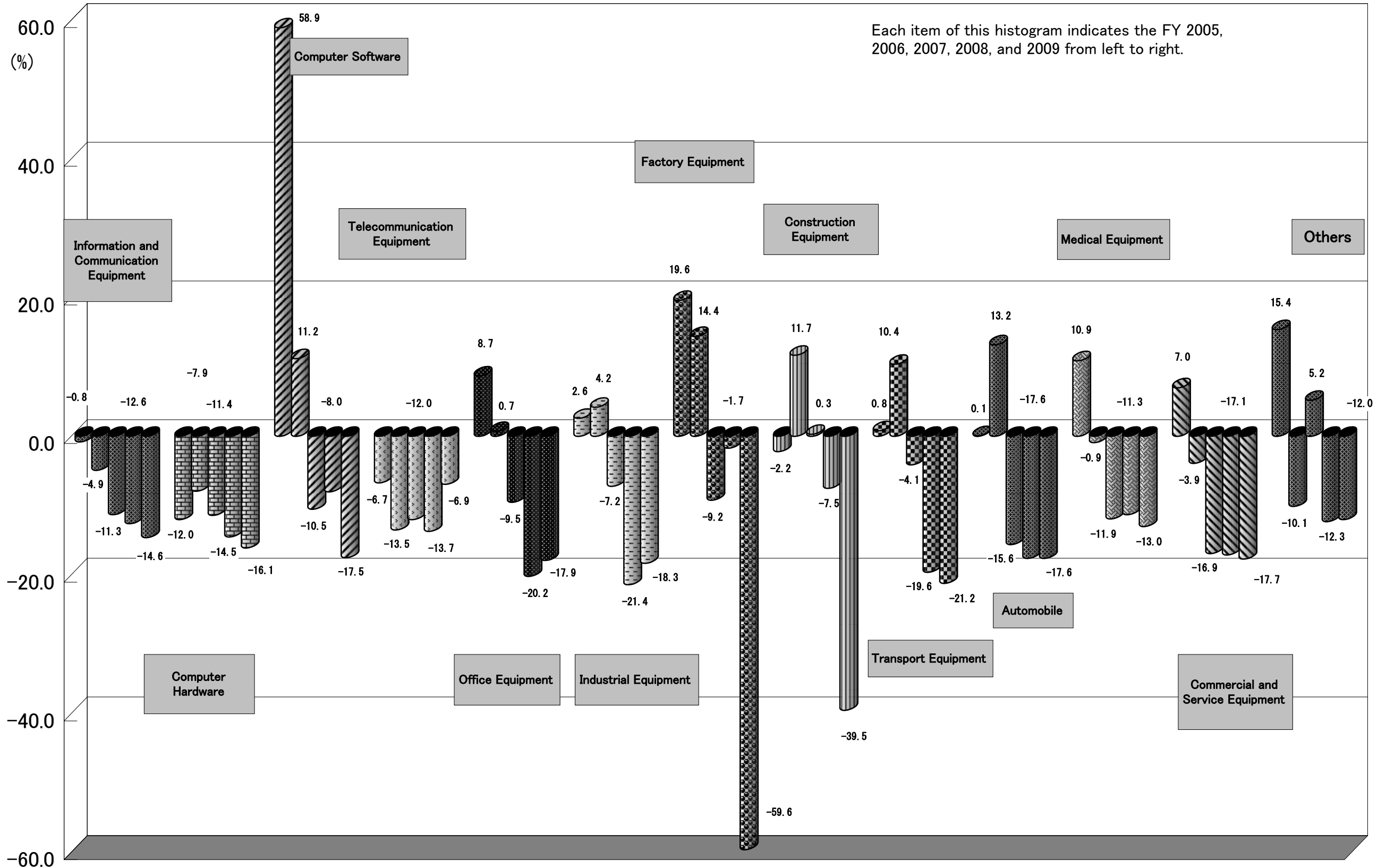
*Trends in Lease Transaction Volume, Leasing Capital Investment and Leasing Percentage to Total Private Capital Investment*



Fiscal Year	1990	1991	1992	1993	1994	1995	1996	1997	1998	1999	2000	2001	2002	2003	2004	2005	2006	2007	2008	2009
Lease Transaction Volume (100million yen)	84,152	88,016	77,742	71,825	73,497	76,214	82,867	79,304	71,445	74,024	79,457	77,337	73,743	73,778	76,252	79,413	78,677	71,542	60,564	49,219
Yearly Change (%)	119.1	104.6	88.3	92.4	102.3	103.7	108.7	95.7	90.1	103.6	107.3	97.3	95.4	100.0	103.4	104.1	99.1	90.9	84.7	81.3
Leasing Capital investment (100 million yen)	65,420	68,843	62,813	59,780	61,631	65,804	72,238	70,180	63,150	65,862	69,922	69,148	66,052	65,917	68,086	71,017	71,213	63,420	54,444	44,058
Yearly Change (%)	113.7	105.2	91.2	95.2	103.1	106.8	109.8	97.2	90.0	104.3	106.2	98.9	95.5	99.8	103.3	104.3	100.3	89.1	85.8	80.9
Leasing Percentage to Total Private Capital Investment(%)	7.10	7.41	7.19	7.95	8.49	8.96	9.48	8.91	8.88	9.53	9.65	10.05	10.14	9.78	9.52	9.36	8.92	7.80	7.09	7.01
Corporation Reserched	316	324	327	327	335	336	338	344	329	314	304	283	272	262	258	259	258	248	241	233

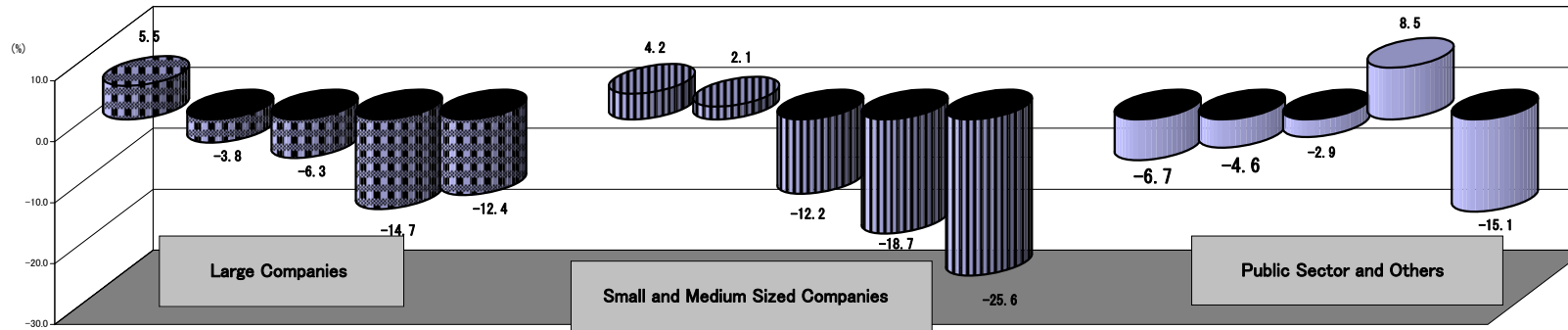
※Total Private Capital Investment, based upon nominal value, is researched by Cabinet Office. The statistic in FY 2009 is preliminary.

# Lease Transaction Volume by Type of Equipment - Yearly Change (%)



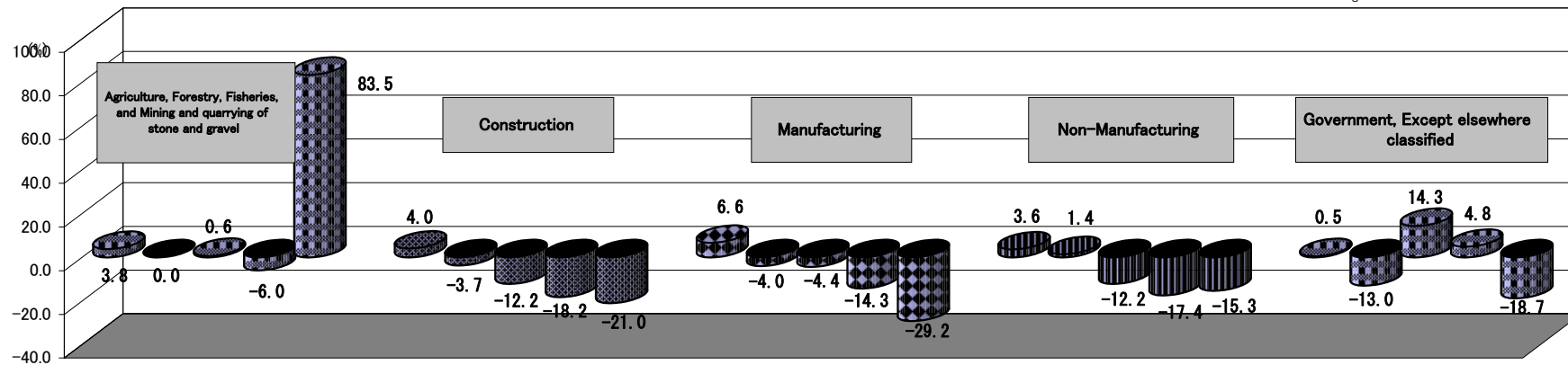
**Lease Transaction Volume by Size of Lessee - Yearly Change (%)**

Each item of this histogram indicates the FY 2005, 2006, 2007, 2008, and 2009 from left to right.



**Lease Transaction Volume by Type of Business of Lessee - Yearly Change (%)**

Each item of this histogram indicates the FY 2005, 2006, 2007, 2008, and 2009 from left to right.



(note) The yearly change of Non-Manufacturing Sector in FY 2004 is calculated from the total volume of Non-Manufacturing Sector and Construction Sector.

Manufacturing		Yearly Change(%)
(1) Manufacture of Food		-23.2
(2) Textile mill, Lumber and wood, and Pulp Products		-3.5
(3) Chemical and allied, Petroleum and coal, Plastic Products		-36.4
(4) Iron and Steel, Non-ferrous Metal, and Fabricated Metal Products		-30.6
(5) Production, Electrical, Information and Communication, Transportation Machinery		-34.8
(6) Others		-30.1

Non-Manufacturing		Yearly Change(%)
(1) Electricity, Gas, Heat supply and Water		-20.6
(2) Information and Communications		1.0
(3) Transport and Postal activities		-3.5
(4) Wholesale and Retail trade		-20.7
(5) Finance and Insurance		-9.9
(6) Real estate, Goods rental, and Leasing		24.8
(7) Accommodations, Eating and drinking services		-29.5
(8) Medical, Health care and Welfare		-23.8
(9) Services, N.E.C.		-22.6

Due to that the classification of type of business is changed in FY 2008, the detail of yearly change in FY 2008 is not adjusted.

## Trends in Lease Transaction Volume, Leasing Capital Investment and Leasing Percentage to Total Private Capital Investment

(Unit: 100 million yen, %)

Fiscal Year	Lease Transaction Volume		Leasing Capital Investment		Total Private Capital Investment		Leasing Percentage (B)/(C)
	(A)	Yearly Change	(B)	Yearly Change	(C)	Yearly Change	
1963	7	—	—	—	46,702	—	—
1964	40	571.4	—	—	54,670	117.1	—
1965	67	167.5	—	—	50,883	93.1	—
1966	109	162.7	—	—	65,160	128.1	—
1967	290	266.1	—	—	84,691	130.0	—
1968	450	155.2	—	—	103,499	122.2	—
1969	1,200	266.7	—	—	135,607	131.0	—
1970	2,106	175.5	—	—	156,685	115.5	—
1971	2,793	132.6	—	—	152,967	97.6	—
1972	3,721	133.2	—	—	168,937	110.4	—
1973	5,279	141.9	—	—	224,299	132.8	—
1974	5,290	100.2	—	—	245,518	109.5	—
1975	5,621	106.3	—	—	243,739	99.3	—
1976	8,127	144.6	—	—	256,077	105.1	—
1977	8,604	105.9	—	—	264,534	103.3	—
1978	10,566	122.8	7,820	—	293,354	110.9	2.67
1979	14,611	138.3	10,330	132.2	340,188	116.0	3.04
1980	15,744	107.8	11,550	111.8	396,807	—	2.91
1981	19,327	122.8	14,342	124.2	413,464	104.2	3.47
1982	23,966	124.0	18,872	131.6	420,013	101.6	4.49
1983	29,927	124.9	23,262	123.3	423,263	100.8	5.50
1984	36,758	122.8	28,843	124.0	477,141	112.7	6.04
1985	43,225	117.6	33,520	116.2	545,560	114.3	6.14
1986	47,575	110.1	37,636	112.3	563,462	103.3	6.68
1987	52,967	111.3	42,089	111.8	600,936	106.7	7.00
1988	67,170	126.8	52,226	124.1	718,103	119.5	7.27
1989	70,649	105.2	57,540	110.2	807,038	112.4	7.13
1990	84,152	119.1	65,420	113.7	920,967	114.1	7.10
1991	88,016	104.6	68,843	105.2	929,323	100.9	7.41
1992	77,742	88.3	62,813	91.2	873,450	94.0	7.19
1993	71,825	92.4	59,780	95.2	751,634	86.1	7.95
1994	73,497	102.3	61,631	103.1	725,658	96.5	8.49
1995	76,214	103.7	65,804	106.8	734,111	101.2	8.96
1996	82,867	108.7	72,238	109.8	762,071	103.8	9.48
1997	79,304	95.7	70,180	97.2	787,681	103.4	8.91
1998	71,445	90.1	63,150	90.0	710,753	90.2	8.88
1999	74,024	103.6	65,862	104.3	690,786	97.2	9.53
2000	79,457	107.3	69,922	106.2	724,526	104.9	9.65
2001	77,337	97.3	69,148	98.9	688,294	95.0	10.05
2002	73,743	95.4	66,052	95.5	651,154	94.6	10.14
2003	73,778	100.0	65,917	99.8	673,970	103.5	9.78
2004	76,252	103.4	68,086	103.3	715,037	106.1	9.52
2005	79,413	104.1	71,017	104.3	759,010	106.1	9.36
2006	78,677	99.1	71,213	100.3	798,259	105.2	8.92
2007	71,542	90.9	63,420	89.1	813,387	101.9	7.80
2008	60,564	84.7	54,444	85.8	767,602	94.4	7.09
2009	49,219	81.3	44,058	80.9	628,219	81.8	7.01

※ Total Private Capital Investment, based upon nominal value, is researched by the Cabinet Office.

## Trends in Lease Transaction Volume by Type of Equipment

(Unit: in 100 million yen)

	FY 2006		FY 2007		FY 2008		FY 2009		Yearly Change				
	Leasing Volume	Component Ratio(%)	Leasing Volume	Component Ratio (%)	Leasing Volume	Component Ratio (%)	Leasing Volume	Component Ratio (%)	06/05	07/06	08/07	09/08	
1	Information and Communication Equipment	25,650	32.6	22,754	31.8	19,877	32.8	16,968	34.5	95.1	88.7	87.4	85.4
	Computer Hardware	13,611	17.3	12,056	16.9	10,306	17.0	8,644	17.6	92.1	88.6	85.5	83.9
	Computer Software	6,677	8.5	5,976	8.4	5,496	9.1	4,532	9.2	111.2	89.5	92.0	82.5
	Telecommunication Equipment	5,363	6.8	4,722	6.6	4,075	6.7	3,792	7.7	86.5	88.0	86.3	93.1
2	Office Equipment	7,271	9.2	6,582	9.2	5,254	8.7	4,312	8.8	100.7	90.5	79.8	82.1
3	Industrial Equipment	10,886	13.8	10,099	14.1	7,935	13.1	6,485	13.2	104.2	92.8	78.6	81.7
4	Factory Equipment	2,788	3.5	2,532	3.5	2,488	4.1	1,006	2.0	114.4	90.8	98.3	40.4
5	Construction Equipment	1,849	2.4	1,854	2.6	1,714	2.8	1,036	2.1	111.7	100.3	92.5	60.5
6	Transport Equipment	8,174	10.4	7,841	11.0	6,306	10.4	4,970	10.1	110.4	95.9	80.4	78.8
	Automobile	7,131	9.1	6,022	8.4	4,960	8.2	4,088	8.3	113.2	84.4	82.4	82.4
	Vessel	25	0.0	23	0.0	93	0.2	49	0.1	136.0	92.0	405.7	52.7
7	Medical Equipment	3,885	4.9	3,425	4.8	3,037	5.0	2,641	5.4	99.1	88.1	88.7	87.0
8	Commercial and Service Equipment	12,045	15.3	10,011	14.0	8,300	13.7	6,829	13.9	96.1	83.1	82.9	82.3
	Commercial Equipment	6,073	7.7	5,557	7.8	4,599	7.6	3,993	8.1	91.9	91.5	82.8	86.8
9	Others	6,128	7.8	6,444	9.0	5,653	9.3	4,973	10.1	89.9	105.2	87.7	88.0
	Physical and Chemical Equipment	934	1.2	1,118	1.6	771	1.3	588	1.2	109.8	119.7	69.0	76.2
Total		78,677	100.0	71,542	100.0	60,564	100.0	49,219	100.0	99.1	90.9	84.7	81.3
Corporations researched		258		248		241		233					

## Trends in Lease Transaction Volume by Size of Lessee

(Unit: in 100 million yen)

		FY 2006		FY 2007		FY 2008		FY 2009		Yearly Change			
		Leasing Volume	Component Ratio(%)	Leasing Volume	Component Ratio (%)	Leasing Volume	Component Ratio (%)	Leasing Volume	Component Ratio (%)	06/05	07/06	08/07	09/08
1	Large Companies	35,069	44.6	32,861	45.9	28,042	46.3	24,569	49.9	96.2	93.7	85.3	87.6
	Listed companies	-	-	-	-	10,077	16.6	12,436	25.3	-	-	-	123.4
2	Small and Medium Sized Companies	39,522	50.2	34,714	48.5	28,218	46.6	20,997	42.7	102.1	87.8	81.3	74.4
3	Public Sector and Others	4,086	5.2	3,968	5.5	4,305	7.1	3,653	7.4	95.4	97.1	108.5	84.9
<b>Total</b>		<b>78,677</b>	<b>100.0</b>	<b>71,542</b>	<b>100.0</b>	<b>60,564</b>	<b>100.0</b>	<b>49,219</b>	<b>100.0</b>	<b>99.1</b>	<b>90.9</b>	<b>84.7</b>	<b>81.3</b>

## Trends in Lease Transaction Volume by Lessee's Business Type

(Unit: in 100 million yen)

		FY 2006		FY 2007		FY 2008		FY 2009		Yearly Change			
		Leasing Volume	Component Ratio(%)	Leasing Volume	Component Ratio (%)	Leasing Volume	Component Ratio (%)	Leasing Volume	Component Ratio (%)	06/05	07/06	08/07	09/08
1	Agriculture, Forestry, Fisheries, and Mining and quarrying of stone and gravel	345	0.4	347	0.5	326	0.5	598	1.2	100.0	100.6	94.0	183.5
2	Construction	3,410	4.3	2,993	4.2	2,447	4.0	1,933	3.9	96.3	87.8	81.8	79.0
3	Manufacturing	18,507	23.5	17,695	24.7	15,171	25.0	10,746	21.8	96.0	95.6	85.7	70.8
	Manufacture of Food	2,303	2.9	2,245	3.1	1,895	3.1	1,455	3.0	91.1	97.5	84.4	76.8
	Textile mill, Lumber and wood, and Pulp Products	1,586	2.0	1,644	2.3	1,582	2.6	1,527	3.1	87.7	103.7	96.2	96.5
	Chemical and allied, Petroleum and coal, Plastic Products	1,678	2.1	1,693	2.4	1,699	2.8	1,081	2.2	94.1	100.9	100.4	63.6
	Iron and Steel, Non-ferrous Metal, and Fabricated Metal Products	1,947	2.5	1,881	2.6	1,815	3.0	1,259	2.6	99.7	96.6	96.5	69.4
	Production, Electrical, Information and Communication, Transportation	8,117	10.3	7,781	10.9	6,206	10.2	4,046	8.2	97.1	95.9	79.8	65.2
	Others	2,877	3.7	2,451	3.4	1,974	3.3	1,379	2.8	100.6	85.2	80.5	69.9
4	Non-manufacturing	52,786	67.1	46,361	64.8	38,277	63.2	32,412	65.9	101.4	87.8	82.6	84.7
	Electricity, Gas, Heat supply and Water	568	0.7	742	1.0	626	1.0	497	1.0	104.0	130.6	84.4	79.4
	Information and Communications	3,188	4.1	2,932	4.1	2,208	3.6	2,230	4.5	96.3	92.0	75.3	101.0
	Transport and Postal activities	3,349	4.3	3,349	4.7	3,358	5.5	3,242	6.6	97.9	100.0	100.3	96.5
	Wholesale and Retail trade	14,674	18.7	13,065	18.3	10,561	17.4	8,378	17.0	101.4	89.0	80.8	79.3
	Finance and Insurance	2,910	3.7	2,355	3.3	1,946	3.2	1,752	3.6	85.0	80.9	82.6	90.1
	Real estate, Goods rental, and Leasing	1,939	2.5	1,456	2.0	2,739	4.5	3,417	6.9	104.5	75.1	188.1	124.8
	Accommodations, Eating and drinking services	1,933	2.5	1,761	2.5	1,308	2.2	922	1.9	99.0	91.1	74.3	70.5
	Medical, Health care and Welfare	4,395	5.6	4,106	5.7	3,635	6.0	2,771	5.6	95.1	93.4	88.5	76.2
	Services, N.E.C.	19,831	25.2	16,596	23.2	11,896	19.6	9,202	18.7	107.4	83.7	71.7	77.4
5	Government, Except elsewhere classified	3,628	4.6	4,146	5.8	4,343	7.2	3,531	7.2	87.0	114.3	104.8	81.3
<b>Total</b>		<b>78,677</b>	<b>100.0</b>	<b>71,542</b>	<b>100.0</b>	<b>60,564</b>	<b>100.0</b>	<b>49,219</b>	<b>100.0</b>	<b>99.1</b>	<b>90.9</b>	<b>84.7</b>	<b>81.3</b>

(note) Due to that the classification of type of business is changed in FY 2008, the detail of yearly change in FY 2008 is not adjusted.

## Leasing Volume by Type of Equipment (Apr. 2010)

		Leasing cases	Component Ratio (%)	Year-on-year Change (%)	Leasing Volume (in million yen)	Component Ratio (%)	Year-on-year Change (%)
1	Information and Communication Equipment	70,319	42.7	82.4	149,820.0	35.8	87.7
	Computer Hardware	( 38,676 )	( 23.5 )	( 80.7 )	( 80,551.9 )	( 19.3 )	( 93.2 )
	Computer Software	( 12,377 )	( 7.5 )	( 75.2 )	( 42,292.6 )	( 10.1 )	( 76.4 )
	Telecommunication Equipment	( 19,266 )	( 11.7 )	( 91.8 )	( 26,975.5 )	( 6.4 )	( 92.8 )
2	Office Equipment	34,173	20.7	97.0	42,136.2	10.1	98.6
3	Industrial Equipment	3,711	2.3	85.1	51,928.0	12.4	115.4
4	Factory Equipment	383	0.2	93.6	5,862.2	1.4	34.7
5	Construction Equipment	981	0.6	34.6	7,119.5	1.7	61.3
6	Transport Equipment	14,750	8.9	94.9	39,602.7	9.5	89.2
	Automobile	( 13,223 )	( 8.0 )	( 94.6 )	( 34,349.1 )	( 8.2 )	( 100.7 )
	Vessel	( 9 )	( 0.0 )	( 180.0 )	( 298.6 )	( 0.1 )	( 199.1 )
7	Medical Equipment	5,015	3.0	87.2	26,494.9	6.3	94.8
8	Commercial and Service Equipment	22,847	13.9	92.6	57,681.6	13.8	92.1
	Commercial Equipment	( 16,457 )	( 10.0 )	( 87.0 )	( 33,320.6 )	( 8.0 )	( 91.2 )
9	Others	12,651	7.7	74.4	37,723.4	9.0	76.3
	Physical and Chemical Equipment	( 1,212 )	( 0.7 )	( 17.0 )	( 4,426.1 )	( 1.1 )	( 79.0 )
Total		164,830	100.0	86.2	418,368.5	100.0	88.7

【Corporations researched: 237】



## Changes in Lease Transaction Volume

Unit: in 100 Million Yen, Yearly Changes: Parenthesized

	Total	Information and Communication Equipment				Office Equipment	Industry Equipment	Factory Equipment	Construction Equipment	Transport Equipment			Medical Equipment	Commercial and Service Equipment		Others		
		Computer Hardware	Computer Software	Telecommunication Equipment	Automobile					Vessel	Commercial Equipment	Physical and Chemical Equipment						
Calendar Year	2007	74,234 (▲ 4.9)	23,686 (▲ 8.2)	12,560 (▲ 14.0)	6,082 (▲ 1.0)	5,044 (▲ 2.6)	6,830 (▲ 2.2)	10,398 (▲ 1.8)	2,640 (▲ 6.0)	1,892 (▲ 3.1)	7,837 (▲ 4.2)	6,547 (▲ 7.9)	19 (▲ 29.7)	3,477 (▲ 12.9)	10,861 (▲ 10.0)	5,874 (▲ 6.6)	6,613 (▲ 8.3)	865 (▲ 5.1)
	2008	64,027 (▲ 13.8)	21,058 (▲ 11.1)	11,113 (▲ 11.5)	5,610 (▲ 7.8)	4,336 (▲ 14.0)	5,682 (▲ 16.8)	8,602 (▲ 17.3)	2,227 (▲ 15.6)	1,795 (▲ 5.2)	7,111 (▲ 9.3)	5,502 (▲ 16.0)	15 (▲ 21.2)	3,161 (▲ 9.1)	8,521 (▲ 21.5)	4,808 (▲ 18.2)	5,870 (▲ 11.2)	862 (▲ 0.4)
	2009	51,376 (▲ 19.8)	17,326 (▲ 17.7)	8,953 (▲ 19.4)	4,751 (▲ 15.3)	3,622 (▲ 16.5)	4,401 (▲ 22.6)	6,992 (▲ 18.7)	1,685 (▲ 24.3)	1,099 (▲ 38.8)	5,112 (▲ 28.1)	4,044 (▲ 26.5)	22 (▲ 48.4)	2,805 (▲ 11.3)	7,130 (▲ 16.3)	3,901 (▲ 18.9)	4,825 (▲ 17.8)	604 (▲ 29.9)
Fiscal Year (Final Figures)	2007	71,542 (▲ 9.1)	22,754 (▲ 11.3)	12,056 (▲ 11.4)	5,976 (▲ 10.5)	4,722 (▲ 12.0)	6,582 (▲ 9.5)	10,099 (▲ 7.2)	2,532 (▲ 9.2)	1,854 (▲ 0.3)	7,841 (▲ 4.1)	6,022 (▲ 15.6)	23 (▲ 8.0)	3,425 (▲ 11.9)	10,011 (▲ 16.9)	5,557 (▲ 8.5)	6,444 (▲ 5.2)	1,118 (▲ 19.7)
	2008	60,564 (▲ 15.3)	19,877 (▲ 12.6)	10,306 (▲ 14.5)	5,496 (▲ 8.0)	4,075 (▲ 13.7)	5,254 (▲ 20.2)	7,935 (▲ 21.4)	2,488 (▲ 1.7)	1,714 (▲ 7.5)	6,306 (▲ 19.6)	4,960 (▲ 17.6)	93 (▲ 305.7)	3,037 (▲ 11.3)	8,300 (▲ 17.1)	4,599 (▲ 17.2)	5,653 (▲ 12.3)	771 (▲ 31.0)
	2009	49,219 (▲ 18.7)	16,968 (▲ 14.6)	8,644 (▲ 16.1)	4,532 (▲ 17.5)	3,792 (▲ 6.9)	4,312 (▲ 17.9)	6,485 (▲ 18.3)	1,006 (▲ 59.6)	1,036 (▲ 39.5)	4,970 (▲ 21.2)	4,088 (▲ 17.6)	49 (▲ 47.3)	2,641 (▲ 13.0)	6,829 (▲ 17.7)	3,993 (▲ 13.2)	4,973 (▲ 12.0)	588 (▲ 23.8)
Half Year	'08 4-9	31,091 (▲ 13.9)	10,096 (▲ 8.8)	5,167 (▲ 12.1)	2,719 (▲ 0.5)	2,209 (▲ 10.1)	2,926 (▲ 17.6)	3,844 (▲ 19.2)	1,058 (▲ 18.2)	833 (▲ 0.0)	3,581 (▲ 9.6)	2,872 (▲ 13.6)	3 (▲ 74.8)	1,593 (▲ 10.9)	4,296 (▲ 21.3)	2,507 (▲ 17.2)	2,864 (▲ 15.9)	408 (▲ 0.5)
	10-3	29,654 (▲ 16.8)	9,983 (▲ 15.2)	5,284 (▲ 17.3)	2,722 (▲ 14.1)	1,996 (▲ 10.8)	2,361 (▲ 24.4)	3,899 (▲ 27.2)	1,437 (▲ 16.4)	768 (▲ 27.8)	3,132 (▲ 15.4)	2,256 (▲ 19.2)	8 (▲ 5.5)	1,435 (▲ 13.0)	4,018 (▲ 14.0)	2,076 (▲ 20.4)	2,622 (▲ 14.2)	360 (▲ 27.8)
	'09 4-9	24,712 (▲ 20.5)	8,115 (▲ 19.6)	4,146 (▲ 19.8)	2,199 (▲ 19.1)	1,771 (▲ 19.8)	2,198 (▲ 24.9)	3,338 (▲ 13.2)	566 (▲ 46.5)	496 (▲ 40.5)	2,399 (▲ 33.0)	1,977 (▲ 31.2)	19 (▲ 465.6)	1,442 (▲ 9.5)	3,599 (▲ 16.2)	1,990 (▲ 20.6)	2,559 (▲ 10.7)	291 (▲ 28.5)
	10-3	24,461 (▲ 17.5)	8,817 (▲ 11.7)	4,534 (▲ 13.9)	2,284 (▲ 16.1)	1,999 (▲ 0.1)	2,089 (▲ 11.5)	2,981 (▲ 23.5)	463 (▲ 67.8)	555 (▲ 27.6)	2,597 (▲ 17.1)	2,123 (▲ 5.9)	30 (▲ 274.2)	1,236 (▲ 13.8)	3,237 (▲ 19.4)	1,884 (▲ 9.2)	2,485 (▲ 5.2)	297 (▲ 17.6)
Quarter Year	'08 4-6	15,508 (▲ 14.5)	5,168 (▲ 11.3)	2,622 (▲ 15.5)	1,379 (▲ 0.8)	1,167 (▲ 12.7)	1,532 (▲ 17.4)	1,805 (▲ 19.7)	521 (▲ 12.0)	392 (▲ 7.2)	1,686 (▲ 13.2)	1,355 (▲ 19.1)	2 (▲ 81.0)	862 (▲ 8.1)	2,125 (▲ 21.4)	1,268 (▲ 17.4)	1,417 (▲ 15.3)	193 (▲ 2.1)
	7-9	15,582 (▲ 13.3)	4,927 (▲ 6.0)	2,545 (▲ 8.3)	1,340 (▲ 0.1)	1,042 (▲ 7.1)	1,393 (▲ 17.8)	2,040 (▲ 18.7)	536 (▲ 23.4)	441 (▲ 5.6)	1,895 (▲ 6.2)	1,517 (▲ 8.1)	1 (▲ 50.8)	731 (▲ 14.0)	2,171 (▲ 21.2)	1,239 (▲ 17.0)	1,447 (▲ 16.6)	214 (▲ 0.9)
	10-12	14,367 (▲ 15.8)	4,575 (▲ 15.0)	2,450 (▲ 14.6)	1,171 (▲ 19.3)	955 (▲ 10.4)	1,190 (▲ 23.5)	1,738 (▲ 25.5)	547 (▲ 10.6)	482 (▲ 17.5)	1,651 (▲ 9.4)	1,247 (▲ 11.3)	7 (▲ 128.7)	693 (▲ 10.4)	2,127 (▲ 17.5)	1,127 (▲ 21.4)	1,364 (▲ 3.6)	190 (▲ 19.1)
	1-3	15,288 (▲ 17.7)	5,408 (▲ 15.3)	2,815 (▲ 19.5)	1,552 (▲ 9.8)	1,041 (▲ 11.1)	1,171 (▲ 25.3)	2,161 (▲ 28.4)	890 (▲ 42.9)	285 (▲ 40.5)	1,481 (▲ 21.2)	1,009 (▲ 27.1)	1 (▲ 83.0)	742 (▲ 15.2)	1,892 (▲ 9.8)	949 (▲ 19.2)	1,258 (▲ 23.3)	170 (▲ 35.6)
	'09 4-6	12,578 (▲ 18.9)	3,989 (▲ 22.8)	2,007 (▲ 23.5)	1,148 (▲ 16.8)	835 (▲ 28.4)	1,150 (▲ 25.0)	1,592 (▲ 11.8)	349 (▲ 33.0)	290 (▲ 26.1)	1,215 (▲ 27.9)	969 (▲ 28.5)	5 (▲ 151.0)	790 (▲ 8.4)	1,931 (▲ 9.1)	1,037 (▲ 18.2)	1,273 (▲ 10.2)	143 (▲ 25.9)
	7-9	12,134 (▲ 22.1)	4,126 (▲ 16.3)	2,139 (▲ 16.0)	1,051 (▲ 21.6)	936 (▲ 10.2)	1,048 (▲ 24.7)	1,746 (▲ 14.4)	217 (▲ 59.6)	206 (▲ 53.3)	1,184 (▲ 37.5)	1,008 (▲ 33.5)	14 (▲ 938.7)	652 (▲ 10.8)	1,668 (▲ 23.2)	953 (▲ 23.1)	1,286 (▲ 11.1)	148 (▲ 30.8)
	10-12	11,376 (▲ 20.8)	3,803 (▲ 16.9)	1,993 (▲ 18.7)	1,001 (▲ 14.5)	810 (▲ 15.2)	1,032 (▲ 13.3)	1,493 (▲ 14.1)	230 (▲ 58.1)	318 (▲ 34.1)	1,233 (▲ 25.3)	1,059 (▲ 15.1)	2 (▲ 65.9)	621 (▲ 10.3)	1,640 (▲ 22.9)	962 (▲ 14.6)	1,007 (▲ 26.1)	143 (▲ 24.8)
	1-3	13,085 (▲ 14.4)	5,014 (▲ 7.3)	2,541 (▲ 9.7)	1,284 (▲ 17.3)	1,189 (▲ 14.2)	1,058 (▲ 9.7)	1,488 (▲ 31.1)	234 (▲ 73.7)	238 (▲ 16.8)	1,365 (▲ 7.8)	1,064 (▲ 5.5)	28 (▲ 3,553.9)	615 (▲ 17.1)	1,597 (▲ 15.6)	922 (▲ 2.9)	1,478 (▲ 17.4)	154 (▲ 9.5)
Monthly	'09 4	4,716 (▲ 22.2)	1,709 (▲ 22.2)	865 (▲ 24.8)	553 (▲ 17.9)	291 (▲ 22.3)	428 (▲ 26.0)	450 (▲ 33.4)	169 (▲ 0.0)	116 (▲ 20.5)	444 (▲ 23.7)	341 (▲ 21.8)	2 (▲ 837.5)	279 (▲ 11.7)	627 (▲ 12.4)	365 (▲ 14.3)	494 (▲ 27.8)	56 (▲ 14.6)
	5	3,633 (▲ 15.6)	1,119 (▲ 15.4)	589 (▲ 9.6)	273 (▲ 9.3)	257 (▲ 30.5)	334 (▲ 22.7)	499 (▲ 10.8)	90 (▲ 46.2)	106 (▲ 9.8)	340 (▲ 34.4)	291 (▲ 27.6)	2 (▲ 300.0)	253 (▲ 6.6)	572 (▲ 17.6)	355 (▲ 12.3)	321 (▲ 3.8)	51 (▲ 7.3)
	6	4,229 (▲ 17.7)	1,162 (▲ 29.5)	554 (▲ 32.7)	321 (▲ 20.5)	287 (▲ 32.0)	388 (▲ 25.8)	643 (▲ 5.3)	91 (▲ 51.1)	68 (▲ 47.4)	430 (▲ 26.4)	337 (▲ 34.9)	2 (▲ 33.6)	257 (▲ 6.4)	733 (▲ 2.4)	317 (▲ 27.4)	458 (▲ 14.6)	37 (▲ 49.9)
	7	4,000 (▲ 20.4)	1,379 (▲ 4.4)	779 (▲ 4.0)	316 (▲ 20.3)	284 (▲ 4.3)	356 (▲ 25.2)	494 (▲ 25.5)	63 (▲ 64.4)	61 (▲ 55.2)	403 (▲ 33.8)	345 (▲ 36.4)	13 (▲ 1,189.2)	193 (▲ 17.9)	539 (▲ 25.6)	331 (▲ 22.5)	513 (▲ 9.5)	58 (▲ 3.5)
	8	3,310 (▲ 21.5)	1,024 (▲ 24.7)	537 (▲ 27.8)	232 (▲ 28.6)	256 (▲ 12.5)	290 (▲ 26.0)	474 (▲ 1.8)	54 (▲ 62.7)	63 (▲ 41.0)	311 (▲ 34.1)	259 (▲ 35.0)	0 (▲ 14.3)	188 (▲ 12.3)	507 (▲ 25.5)	293 (▲ 24.9)	399 (▲ 9.0)	39 (▲ 36.7)
	9	4,824 (▲ 23.9)	1,722 (▲ 18.9)	824 (▲ 21.8)	503 (▲ 18.7)	395 (▲ 12.6)	403 (▲ 23.4)	778 (▲ 13.0)	101 (▲ 53.6)	82 (▲ 58.7)	470 (▲ 42.3)	403 (▲ 29.8)	1 (▲ 933.6)	271 (▲ 3.7)	622 (▲ 18.8)	329 (▲ 21.9)	375 (▲ 27.1)	51 (▲ 44.7)
	10	4,076 (▲ 16.7)	1,480 (▲ 15.4)	825 (▲ 12.9)	392 (▲ 13.6)	263 (▲ 24.3)	358 (▲ 19.2)	531 (▲ 2.3)	85 (▲ 54.4)	136 (▲ 19.3)	409 (▲ 28.9)	345 (▲ 23.0)	1 (▲ 48.7)	225 (▲ 9.0)	471 (▲ 20.2)	287 (▲ 22.9)	381 (▲ 8.2)	46 (▲ 31.3)
	11	3,305 (▲ 16.7)	1,131 (▲ 5.5)	578 (▲ 7.8)	290 (▲ 4.4)	263 (▲ 1.0)	305 (▲ 9.6)	343 (▲ 28.9)	53 (▲ 70.6)	78 (▲ 45.0)	429 (▲ 8.0)	368 (▲ 7.4)	0 (▲ 83.9)	186 (▲ 12.6)	500 (▲ 18.5)	292 (▲ 10.5)	280 (▲ 17.2)	52 (▲ 3.0)
	12	3,995 (▲ 27.4)	1,192 (▲ 26.9)	590 (▲ 32.6)	318 (▲ 23.0)	284 (▲ 16.9)	369 (▲ 10.0)	619 (▲ 15.9)	92 (▲ 49.5)	104 (▲ 39.6)	395 (▲ 35.2)	346 (▲ 13.9)	1 (▲ 73.1)	210 (▲ 9.7)	668 (▲ 27.6)	383 (▲ 10.6)	346 (▲ 43.3)	44 (▲ 35.5)
	'10 1	3,137 (▲ 24.6)	1,321 (▲ 11.6)	708 (▲ 8.0)	386 (▲ 15.6)	226 (▲ 15.1)	284 (▲ 16.4)	284 (▲ 40.4)	49 (▲ 61.6)	52 (▲ 39.1)	273 (▲ 25.0)	237 (▲ 19.8)	0 (▲ 202.0)	141 (▲ 34.4)	448 (▲ 26.8)	233 (▲ 28.2)	285 (▲ 36.0)	38 (▲ 17.3)
	2	3,550 (▲ 10.7)	1,365 (▲ 5.3)	625 (▲ 18.8)	261 (▲ 33.3)	479 (▲ 71.1)	293 (▲ 10.5)	425 (▲ 27.9)	42 (▲ 69.3)	72 (▲ 4.2)	337 (▲ 14.2)	305 (▲ 6.8)	1 (▲ 1,428.1)	166 (▲ 19.6)	396 (▲ 11.6)	242 (▲ 4.2)	453 (▲ 27.3)	36 (▲ 21.1)
	3	6,399 (▲ 10.6)	2,328 (▲ 5.8)	1,208 (▲ 5.2)	636 (▲ 9.5)	484 (▲ 2.3)	480 (▲ 4.5)	779 (▲ 28.8)	142 (▲ 77.2)	114 (▲ 9.0)	754 (▲ 4.2)	523 (▲ 8.0)	26 (▲ 4,131.2)	308 (▲ 3.9)	754 (▲ 9.4)	446 (▲ 20.2)	740 (▲ 61.6)	80 (▲ 1.8)
	4	4,184 (▲ 11.3)	1,498 (▲ 12.3)	806 (▲ 6.8)	423 (▲ 23.6)	270 (▲ 7.2)	421 (▲ 1.4)	519 (▲ 15.4)	59 (▲ 65.3)	71 (▲ 38.7)	396 (▲ 10.8)	343 (▲ 0.7)	3 (▲ 99.1)	265 (▲ 5.2)	577 (▲ 7.9)	333 (▲ 8.8)	377 (▲ 23.7)	44 (▲ 21.0)